

Regional climate sensitivity and its modulation by land surface processes

Sonia I. Seneviratne

Institute for Atmospheric and Climate Science, ETH Zurich, Switzerland
sonia.seneviratne@ethz.ch

Workshop «The Future of Earth System Modelling: Biosphere and Land Surface»

California Institute of Technology/JPL, 27.3.2018



- Relating changes in global temperature to regional extremes and impacts
- Role of soil moisture feedbacks for temperature projections: Global vs regional climate sensitivity
- Regional land-climate interactions in low-emissions scenarios
- Soil moisture and the carbon cycle
- Conclusions



United Nations

FCCC/CP/2015/L.9

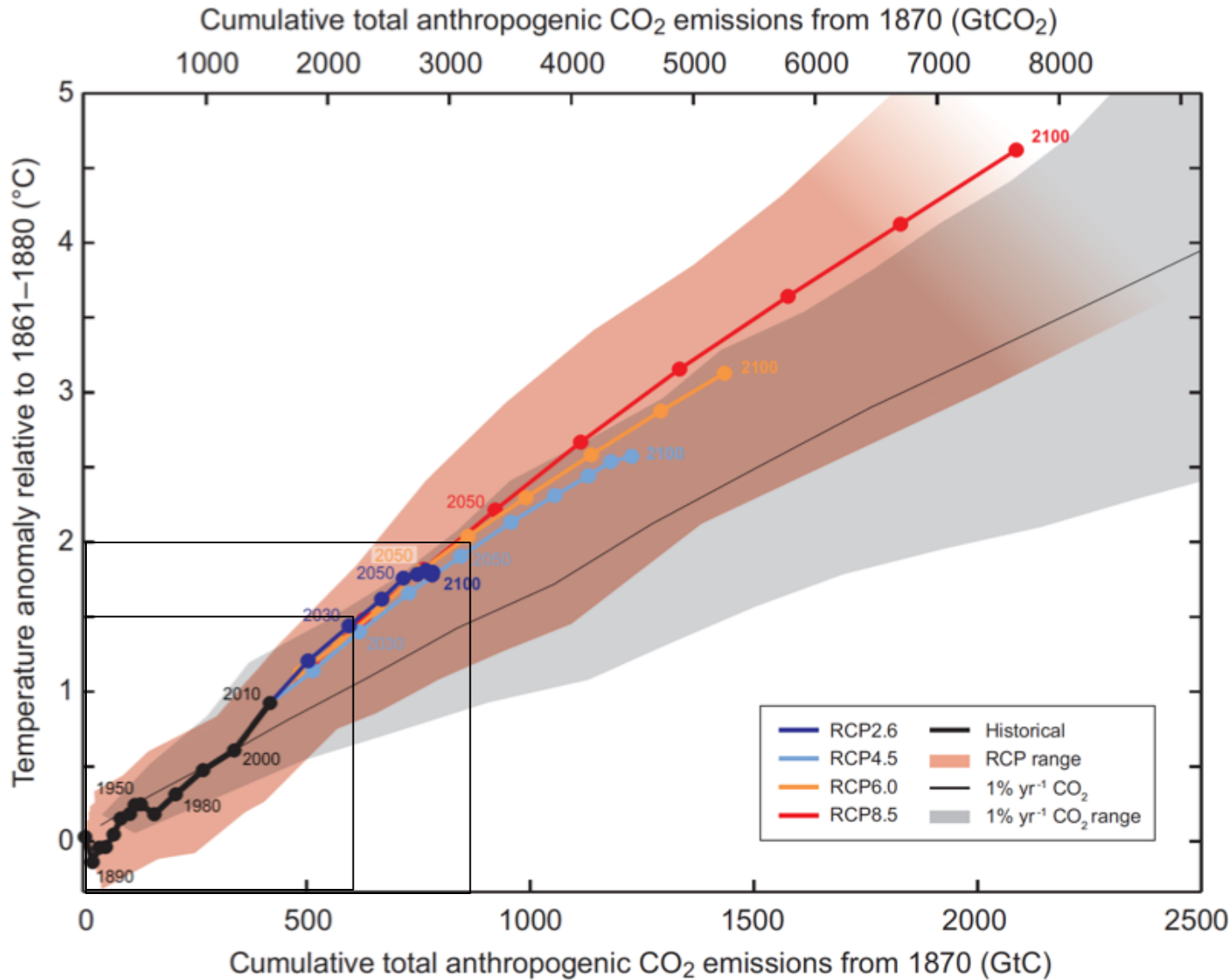


Framework Convention on
Climate Change

Distr.: Limited
12 December 2015

1. This Agreement, in enhancing the implementation of the Convention, including its objective, aims to strengthen the global response to the threat of climate change, in the context of sustainable development and efforts to eradicate poverty, including by:
 - (a) Holding the increase in the global average temperature to well below 2 °C above pre-industrial levels and to pursue efforts to limit the temperature increase to 1.5 °C above pre-industrial levels, recognizing that this would significantly reduce the risks and impacts of climate change;

Link between cumulative CO₂ emissions and global T°

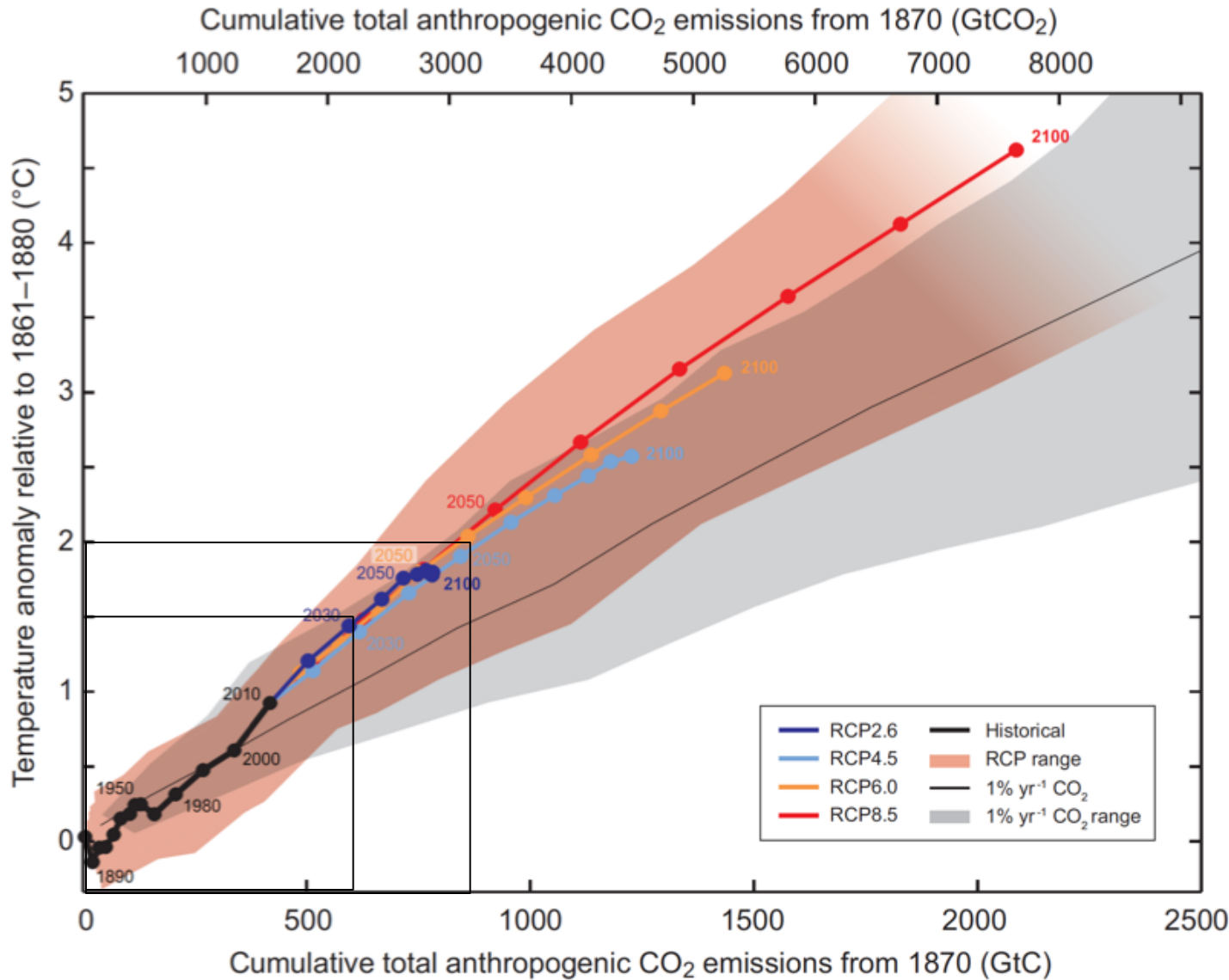


Direct link
between
cumulative CO₂
emissions and
climate response

A global T°
target can be
linked to
cumulative
emissions target

(IPCC 2013)

Link between cumulative CO₂ emissions and global T°



Direct link between cumulative CO₂ emissions and climate response

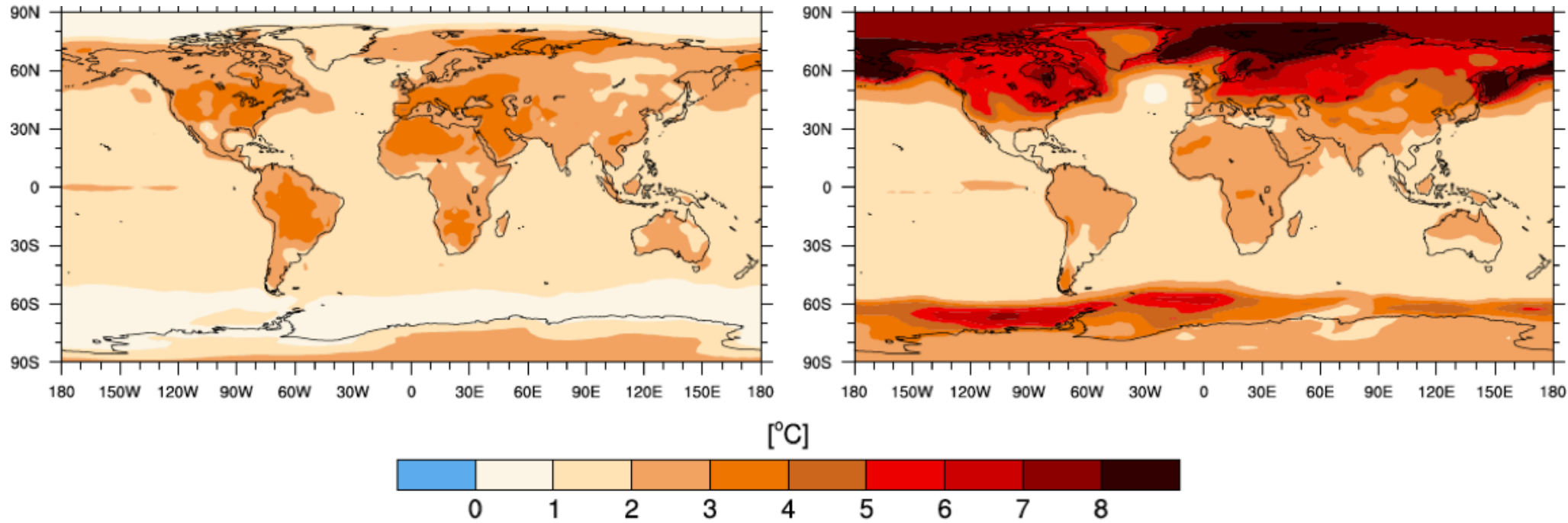
A global T° target can be linked to cumulative emissions target

What are the implications for regional extremes?

(IPCC 2013)

TXx local change when $\Delta T_{glob} = 2C$

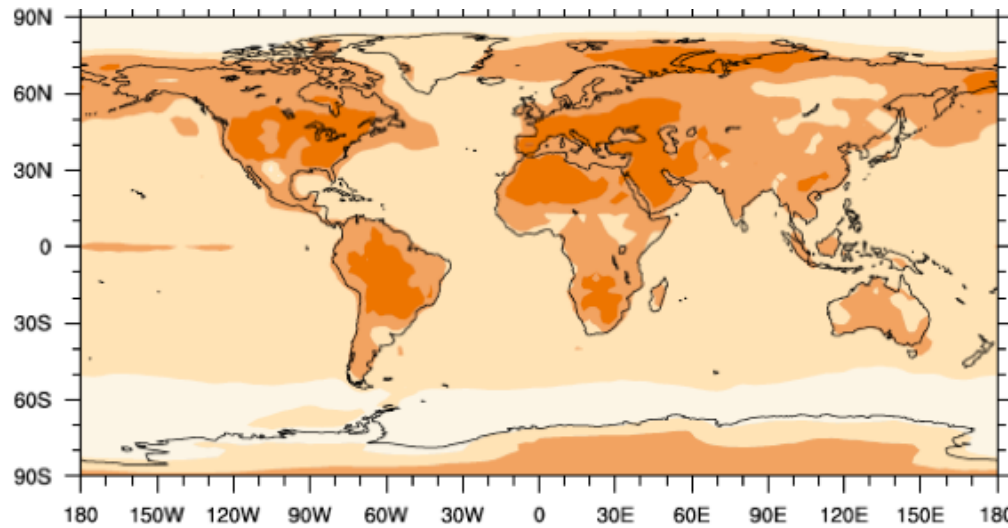
TNn local change when $\Delta T_{glob} = 2C$



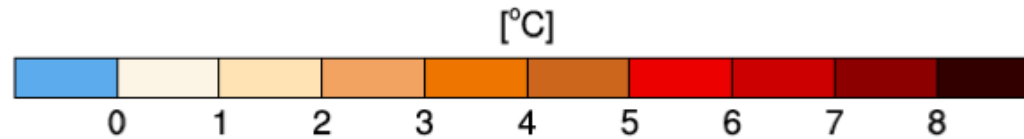
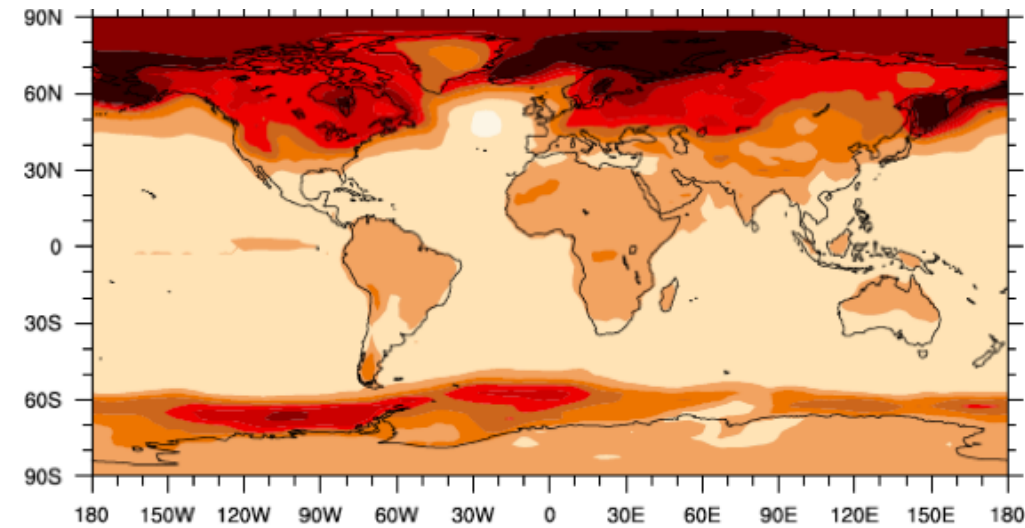
Does a 2C global warming target implies a 2C warming everywhere and all the time?

(Seneviratne et al. 2016, Nature)

TXx local change when $\Delta T_{glob} = 2C$



TNn local change when $\Delta T_{glob} = 2C$

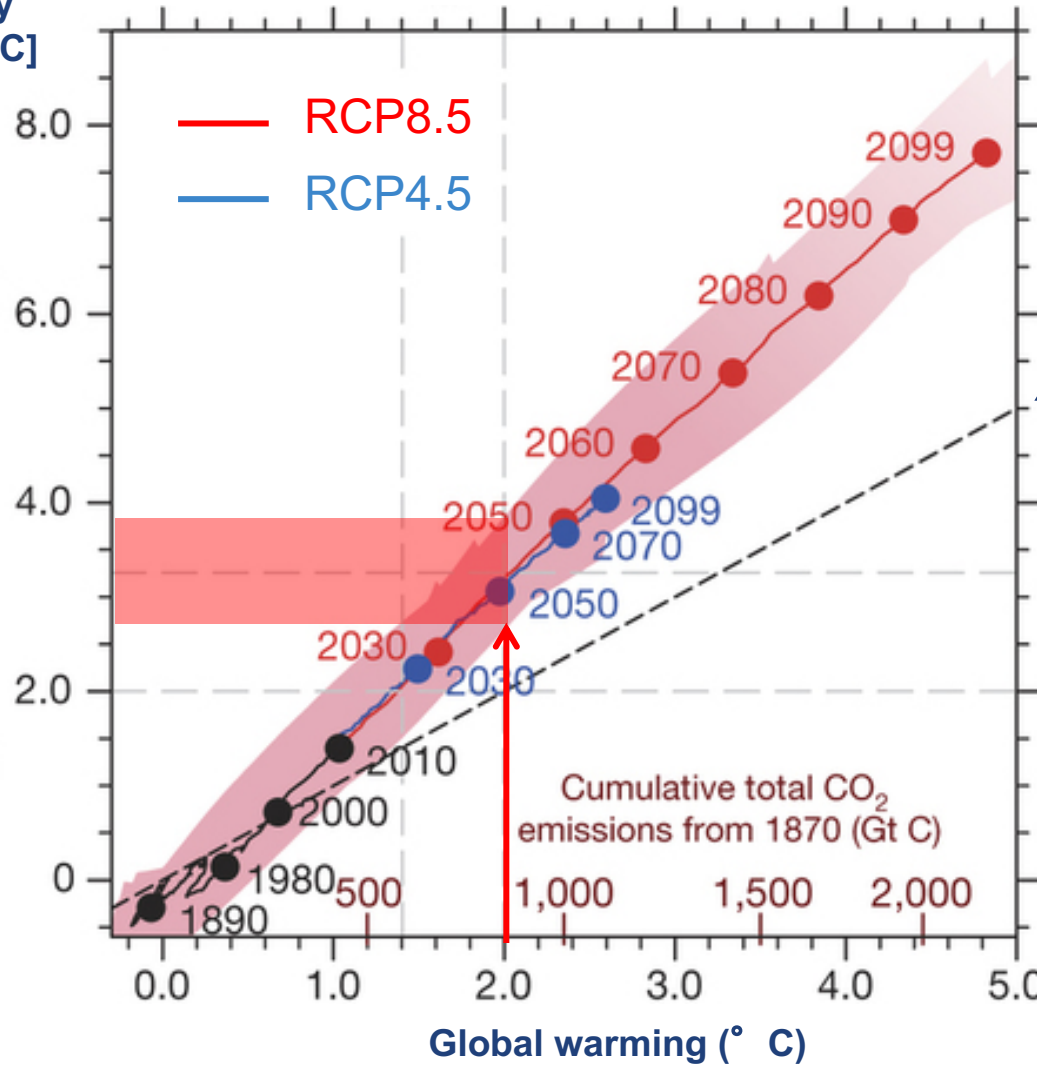


Does a 2C global warming target implies a 2C warming everywhere and all the time?

No! Stronger warming of land extremes compared to global temperature. Why?

(Seneviratne et al. 2016, Nature)

Mediterranean warming, warmest day of the year [C]

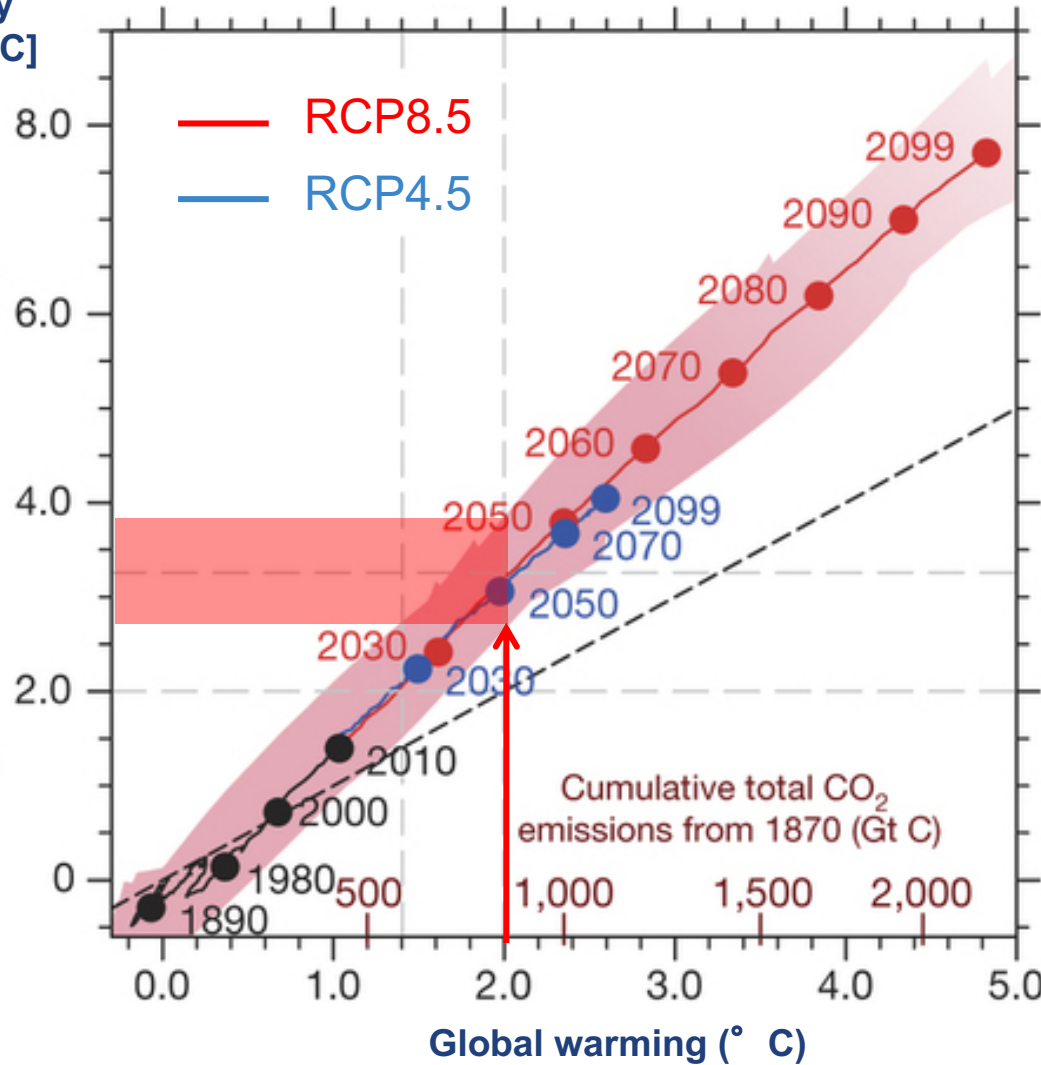


- Stronger warming of extremes in land hot spots vs global temperature

1:1 line

(Seneviratne et al. 2016, Nature)

Mediterranean warming, warmest day of the year [C]



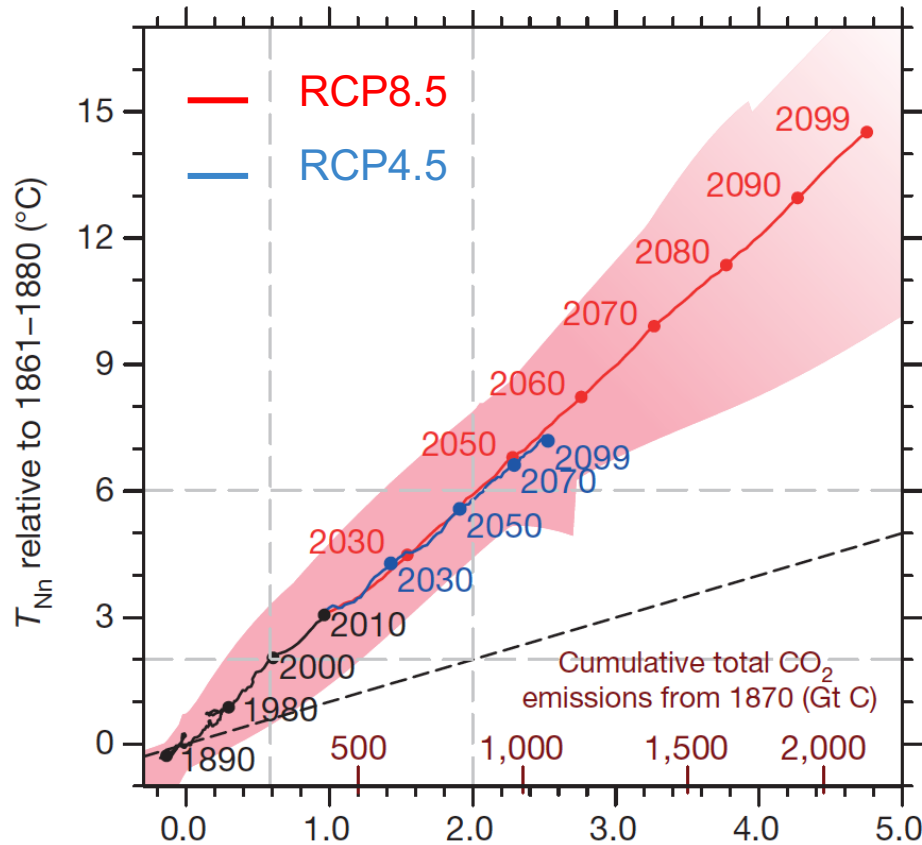
- Stronger warming of extremes in land hot spots vs global temperature
- Robust and almost linear scaling, mostly independent of emissions scenario!

(see also Wartenburger et al. 2017, GMD)

(Seneviratne et al. 2016, Nature)

Also scaling found for warming of minimum temperatures and changes in heavy precipitation

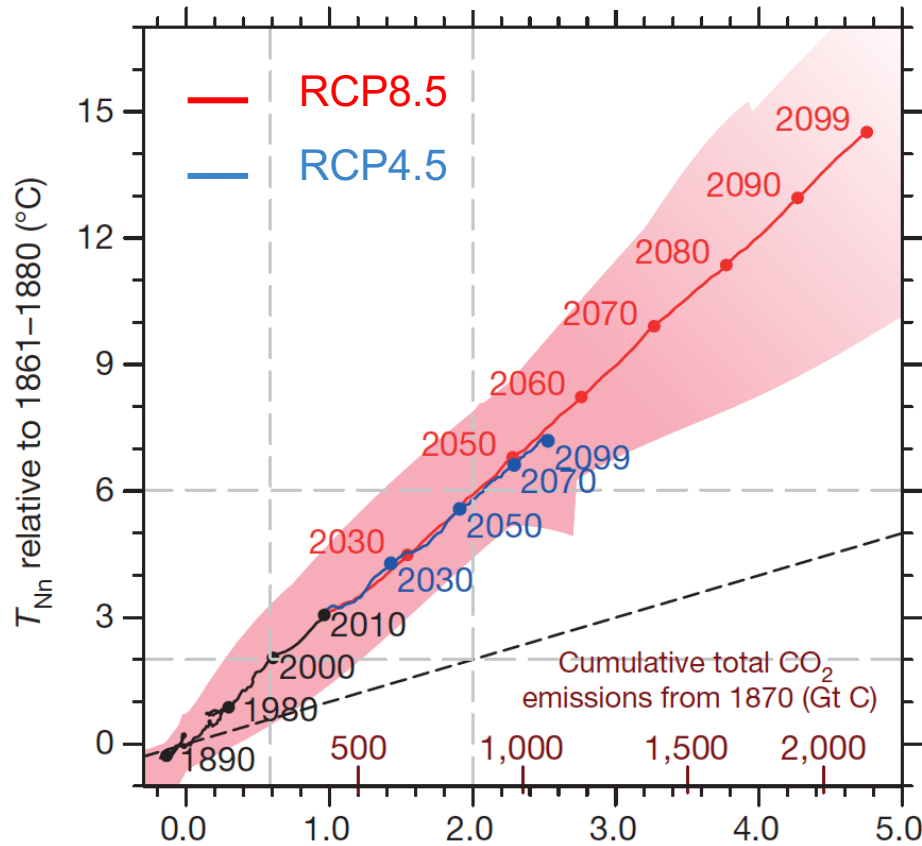
Arctic warming, coldest night of the year ($^{\circ}$ C)



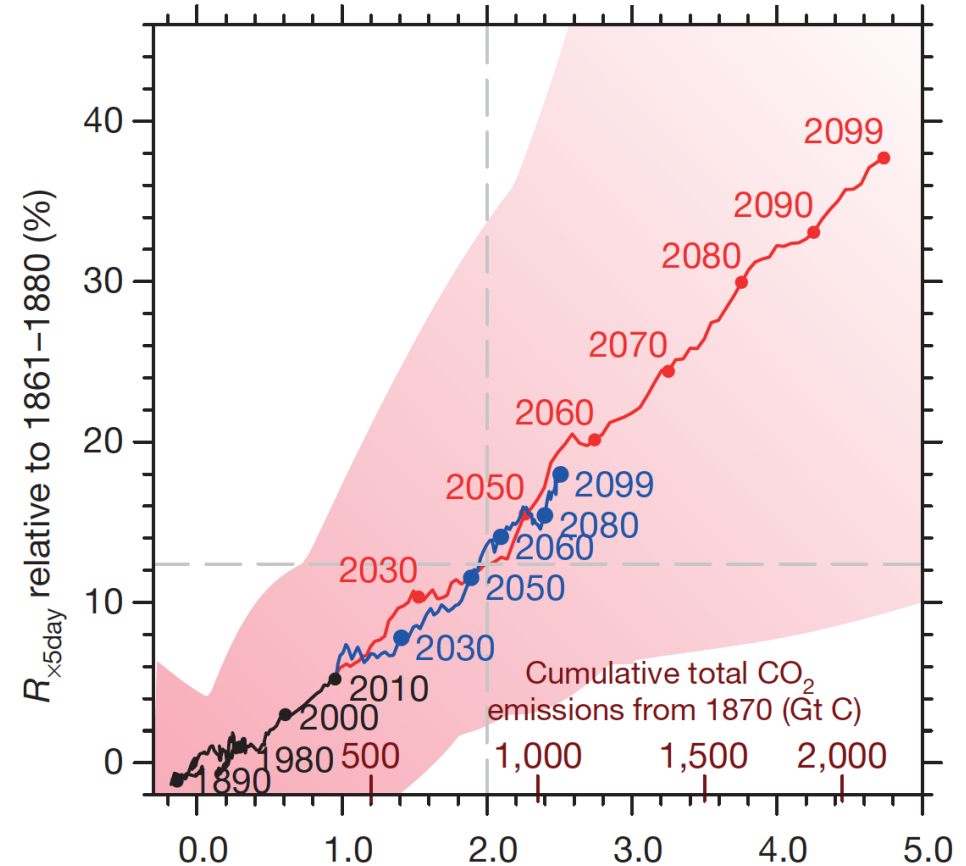
Global mean temperature anomaly relative to 1861-1880 ($^{\circ}$ C)

Also scaling found for warming of minimum temperatures and changes in heavy precipitation

Arctic warming, coldest night of the year (° C)

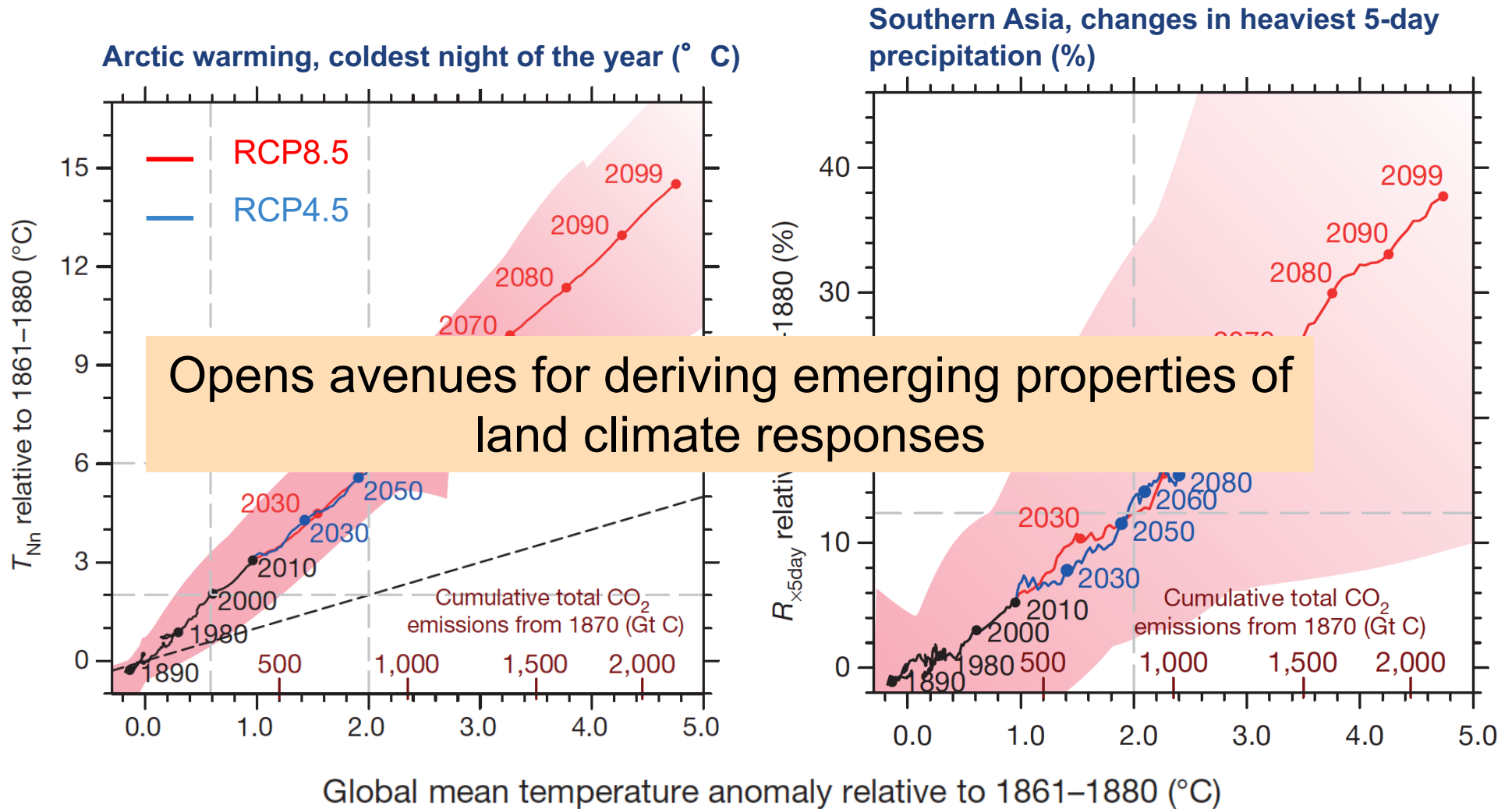


Southern Asia, changes in heaviest 5-day precipitation (%)

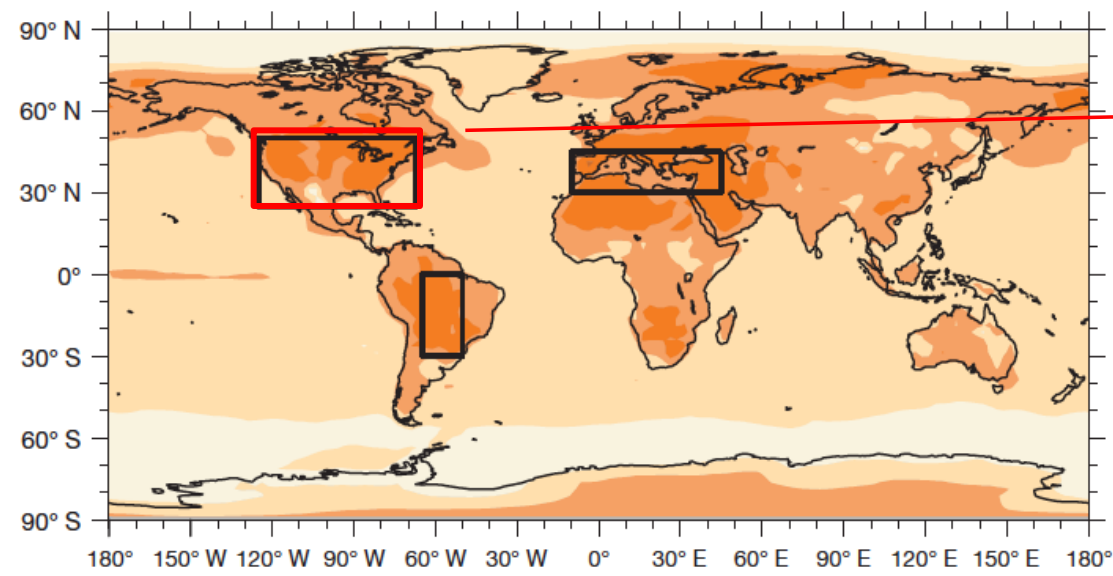


Global mean temperature anomaly relative to 1861–1880 (°C)

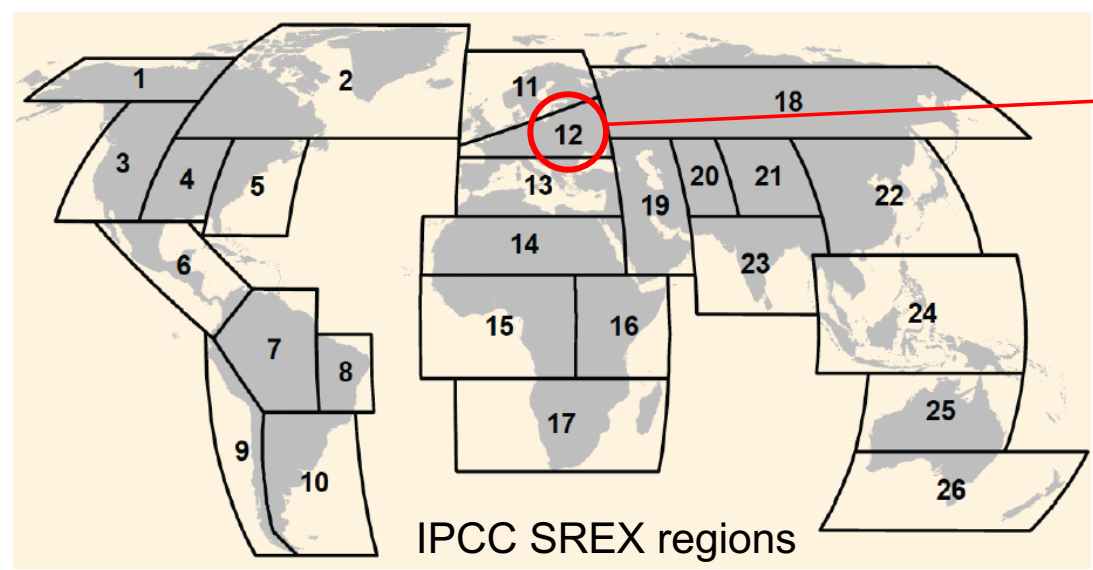
Also scaling found for warming of minimum temperatures and changes in heavy precipitation



Complex regional scaling: Example from 2 regions

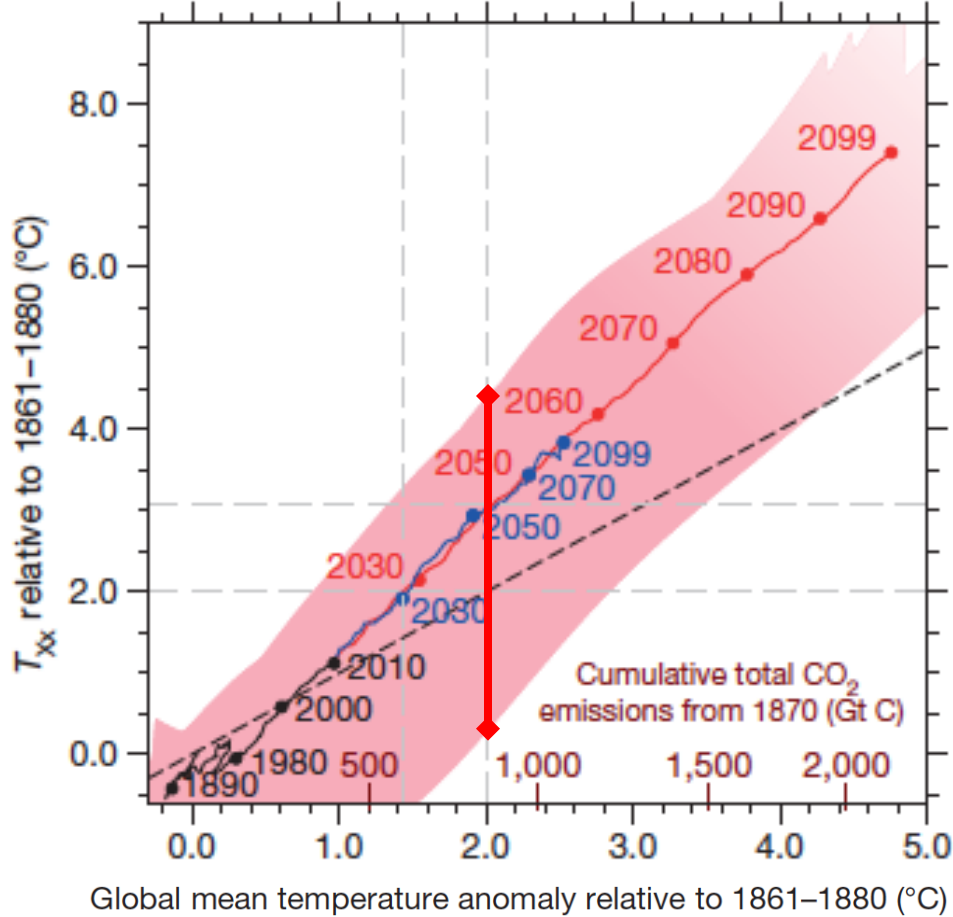


Contiguous US

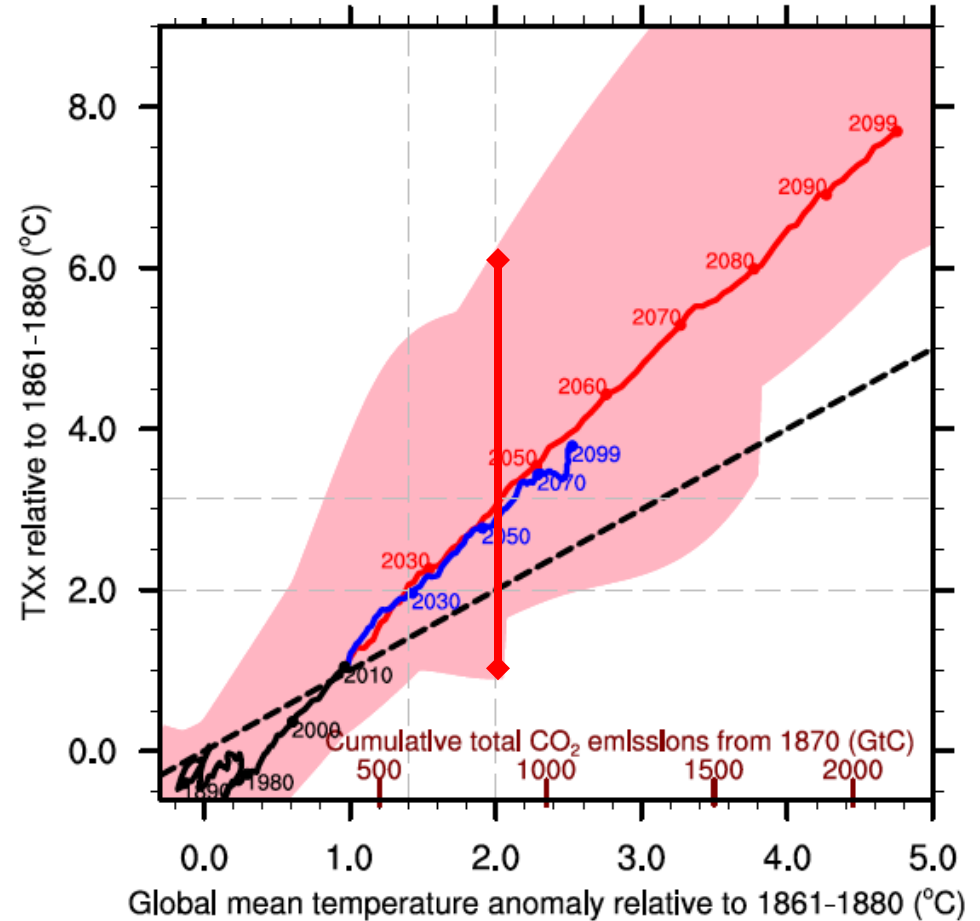


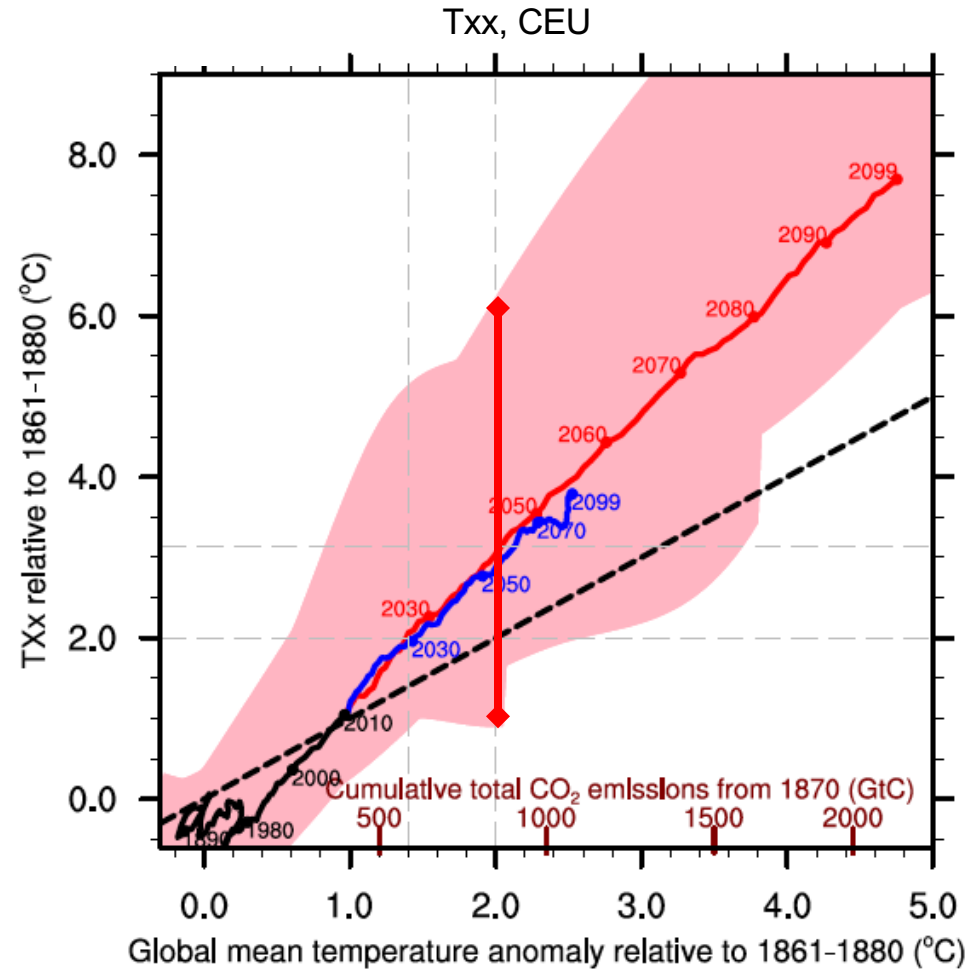
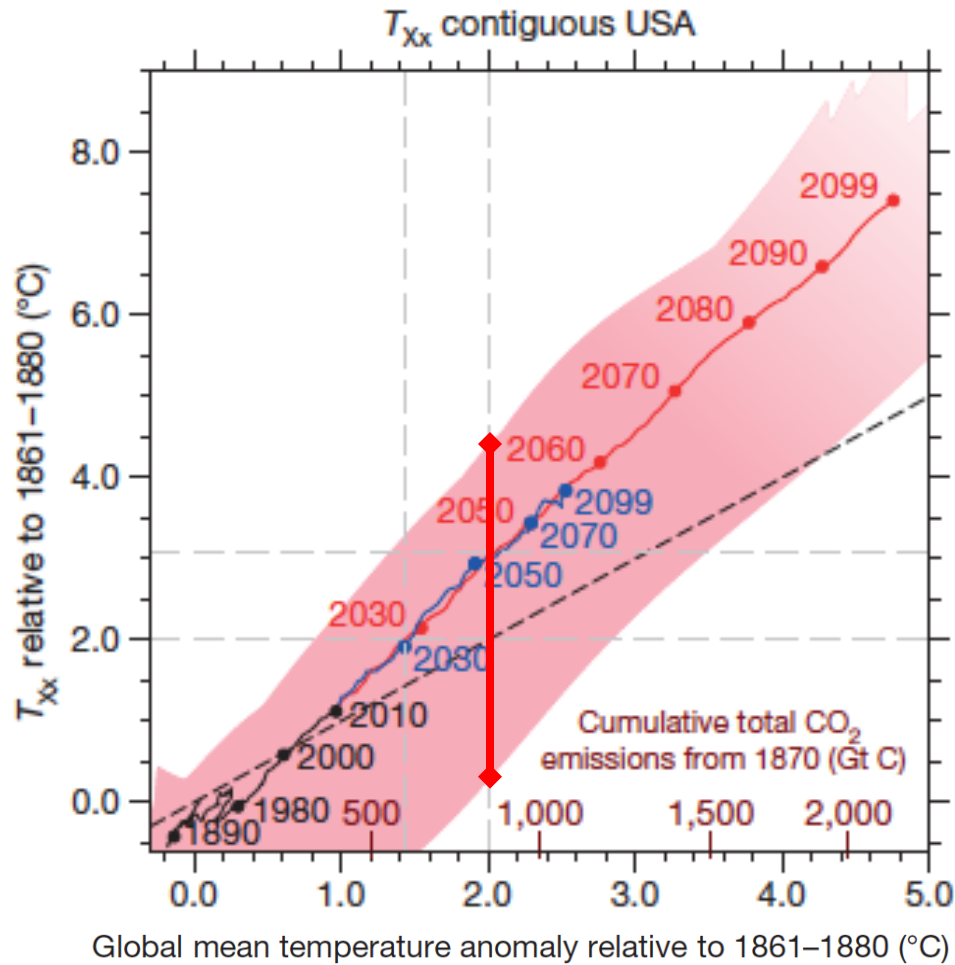
Central Europe

T_{xx} contiguous USA



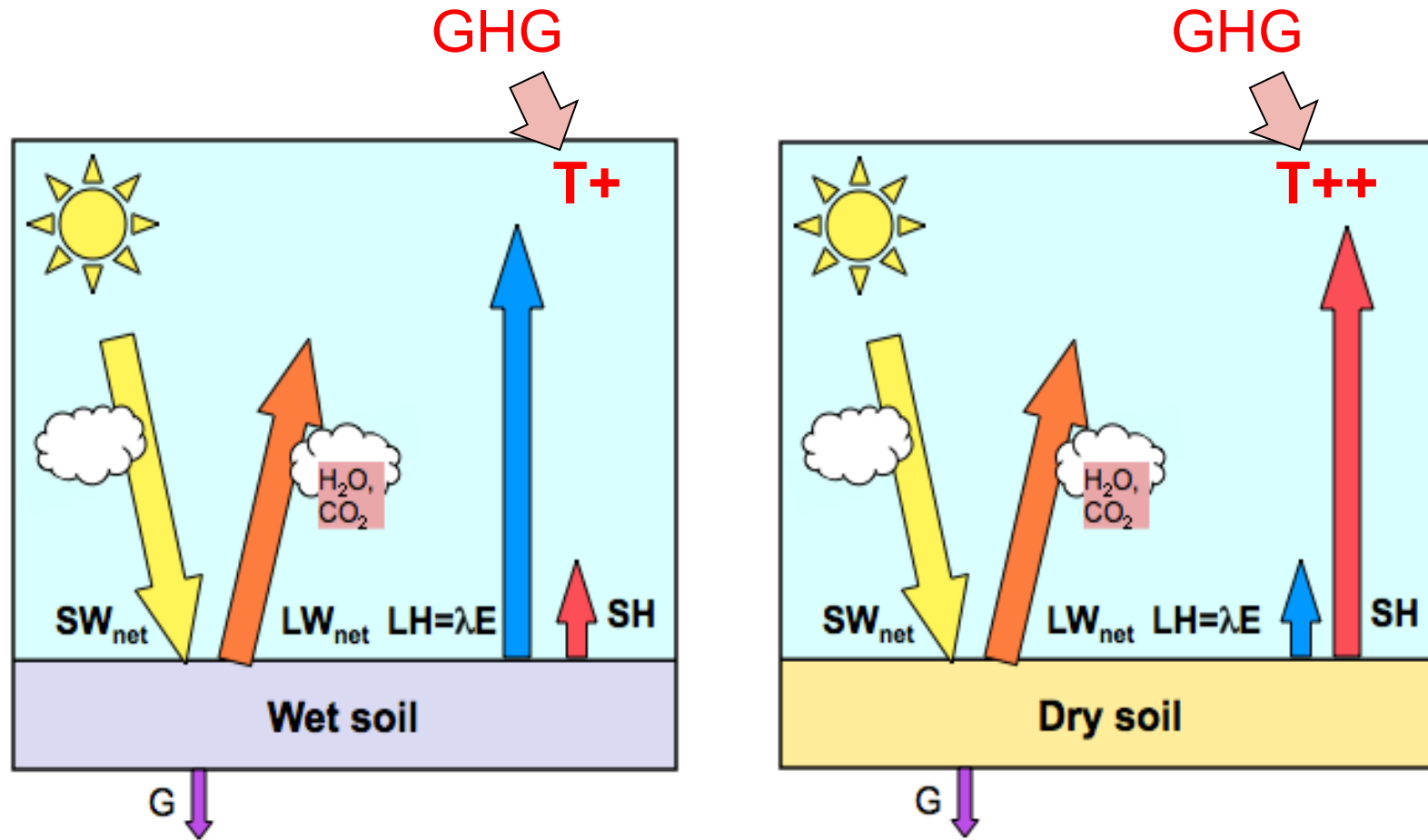
T_{xx} , CEU





NB: Regions with large spread in regional responses are found in locations of known large soil moisture-temperature feedbacks (e.g. Mueller and Seneviratne 2012, PNAS; Seneviratne et al. 2013, GRL)

- Relating changes in global temperature to regional extremes and impacts
- Role of soil moisture feedbacks for temperature projections: Global vs regional climate sensitivity
- Regional land-climate interactions in low-emissions scenarios
- Soil moisture and the carbon cycle
- Conclusions

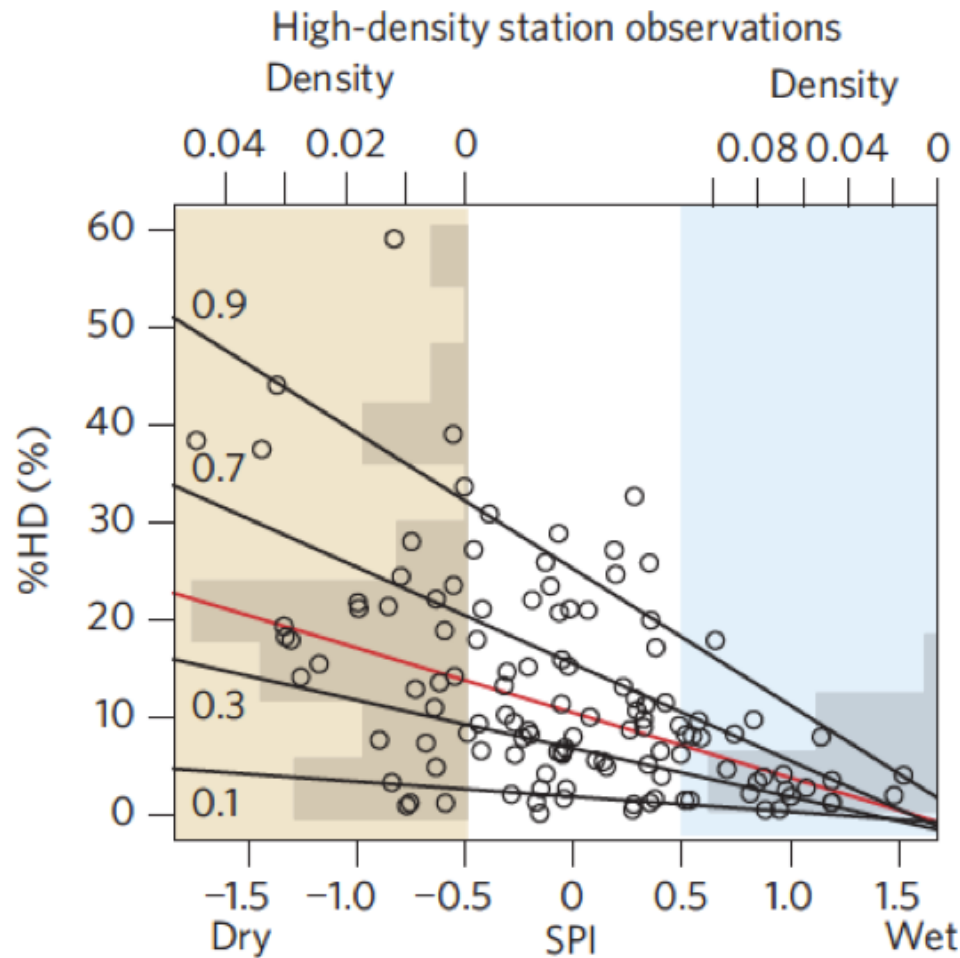


- evidence in projections: Seneviratne et al. 2006, Nature; Diffenbaugh et al. 2007, GRL; Seneviratne et al. 2013, GRL
- observational evidence: Hirschi et al. 2011, Nature Geoscience; Quesada et al. 2012, Nature Climate Change; Mueller and Seneviratne 2012, PNAS; Miralles et al. 2014, Nature Geoscience

Analysis for Southeastern Europe

Quantile regression of %HD with 6-month SPI

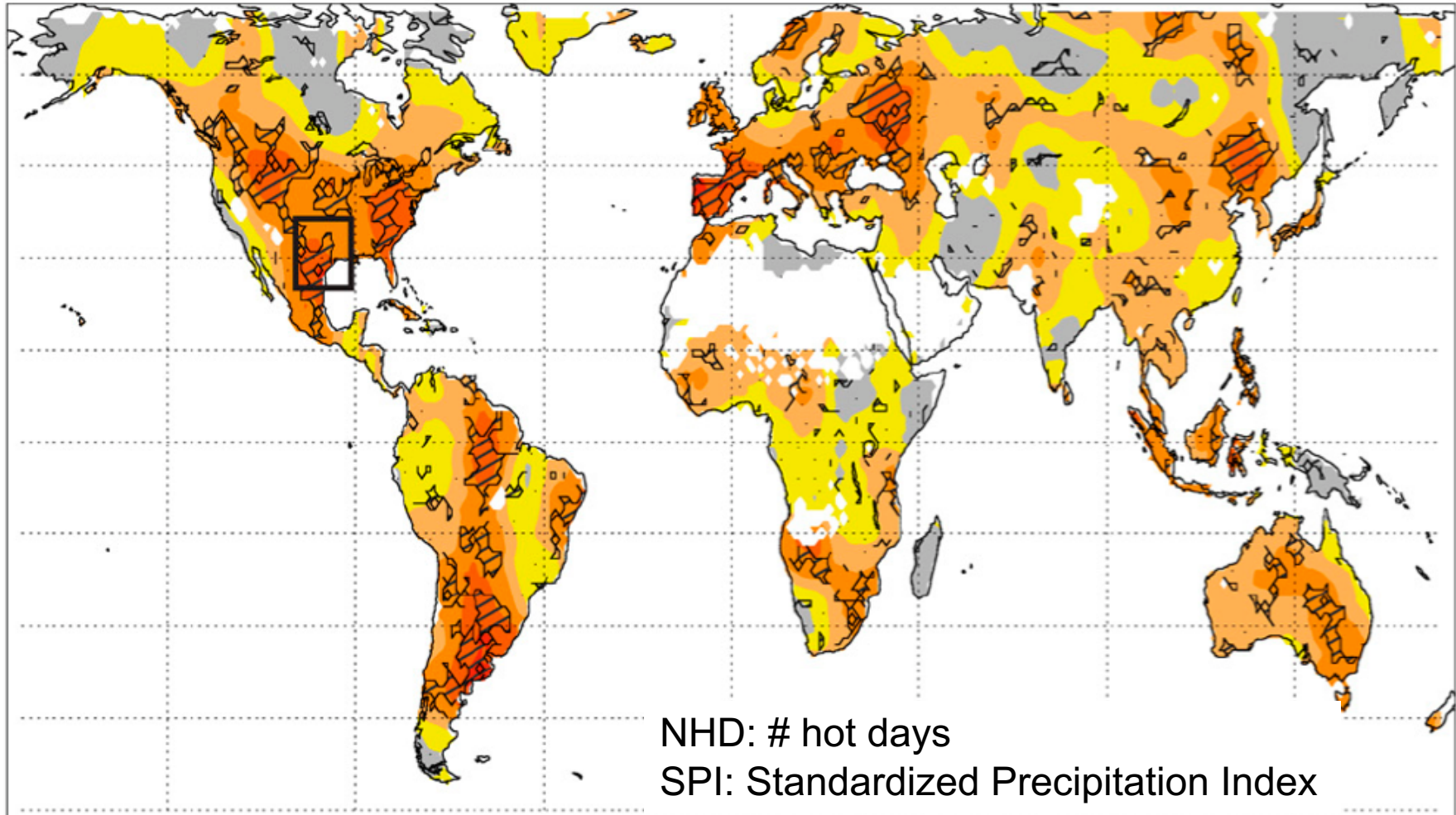
Impact of soil moisture on hot extremes



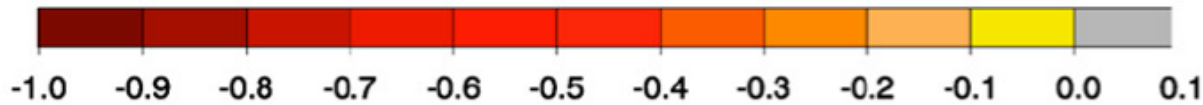
Regression lines: — 0.1, 0.3, 0.7, 0.9 %HD quantiles

(Hirschi et al. 2011, Nature Geoscience)

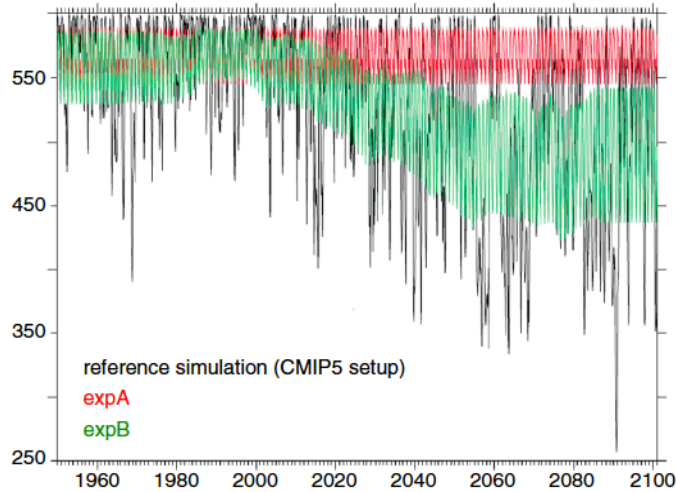
Correlation NHD E-Int and preceding 3mn SPI CRU



NHD: # hot days
SPI: Standardized Precipitation Index



(Mueller and Seneviratne 2012, PNAS)



SM20C

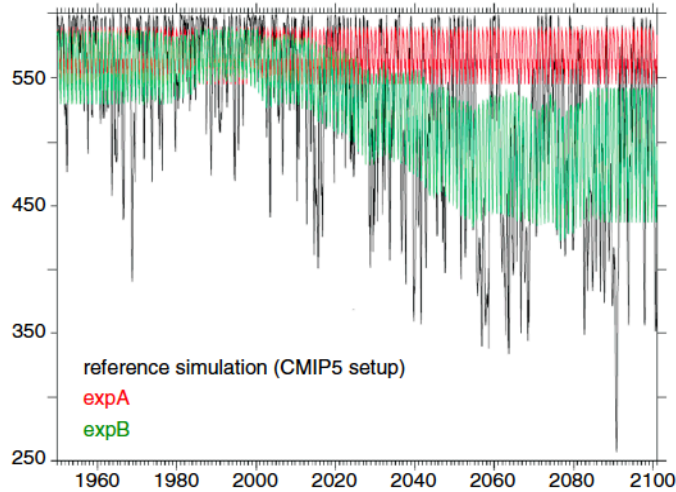
SMtrend

CTL

GLACE-CMIP5 experiments:

(Seneviratne et al. 2013, GRL)

Prescribed soil moisture to present-day levels in projections to assess impact of soil moisture changes for projections



SM20C

SMtrend

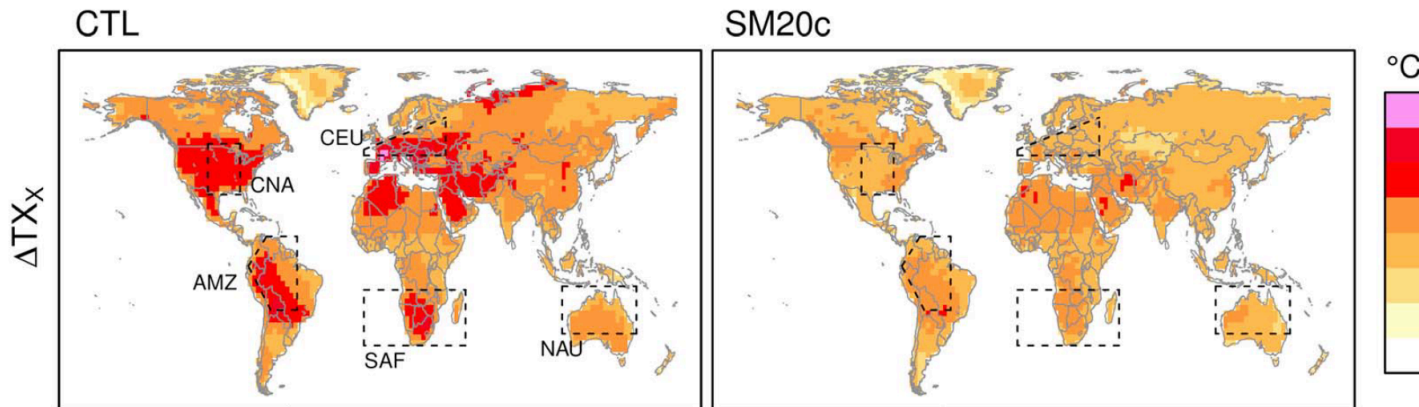
CTL

GLACE-CMIP5 experiments:

(Seneviratne et al. 2013, GRL)

Prescribed soil moisture to present-day levels in projections to assess impact of soil moisture changes for projections

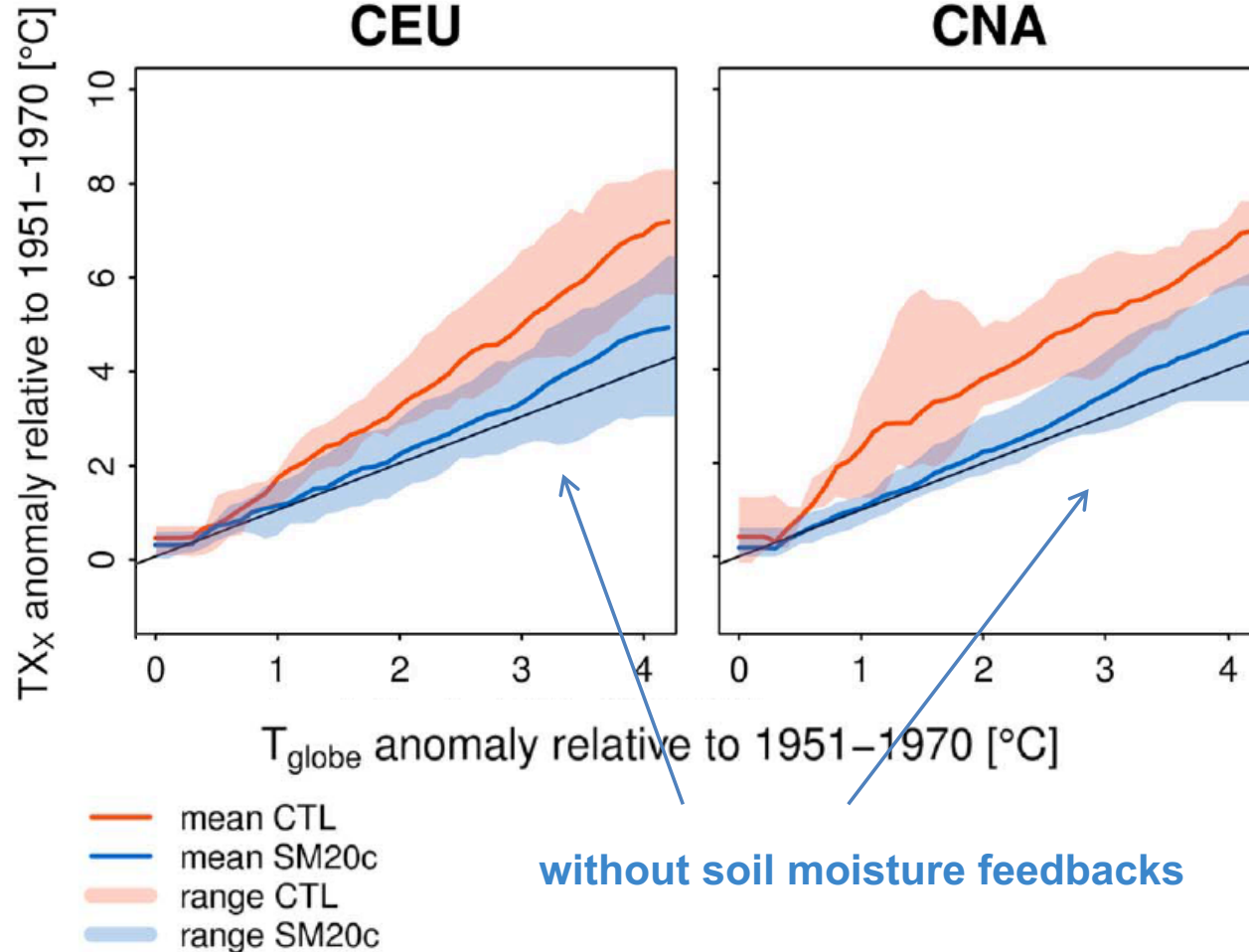
Multi-model mean [2081–2100]–[1951–1970]



Mean drying of the soil is explaining added warming in extremes in several land regions

(Vogel et al. 2017, GRL)

Scaling for GLACE-CMIP5 experiments

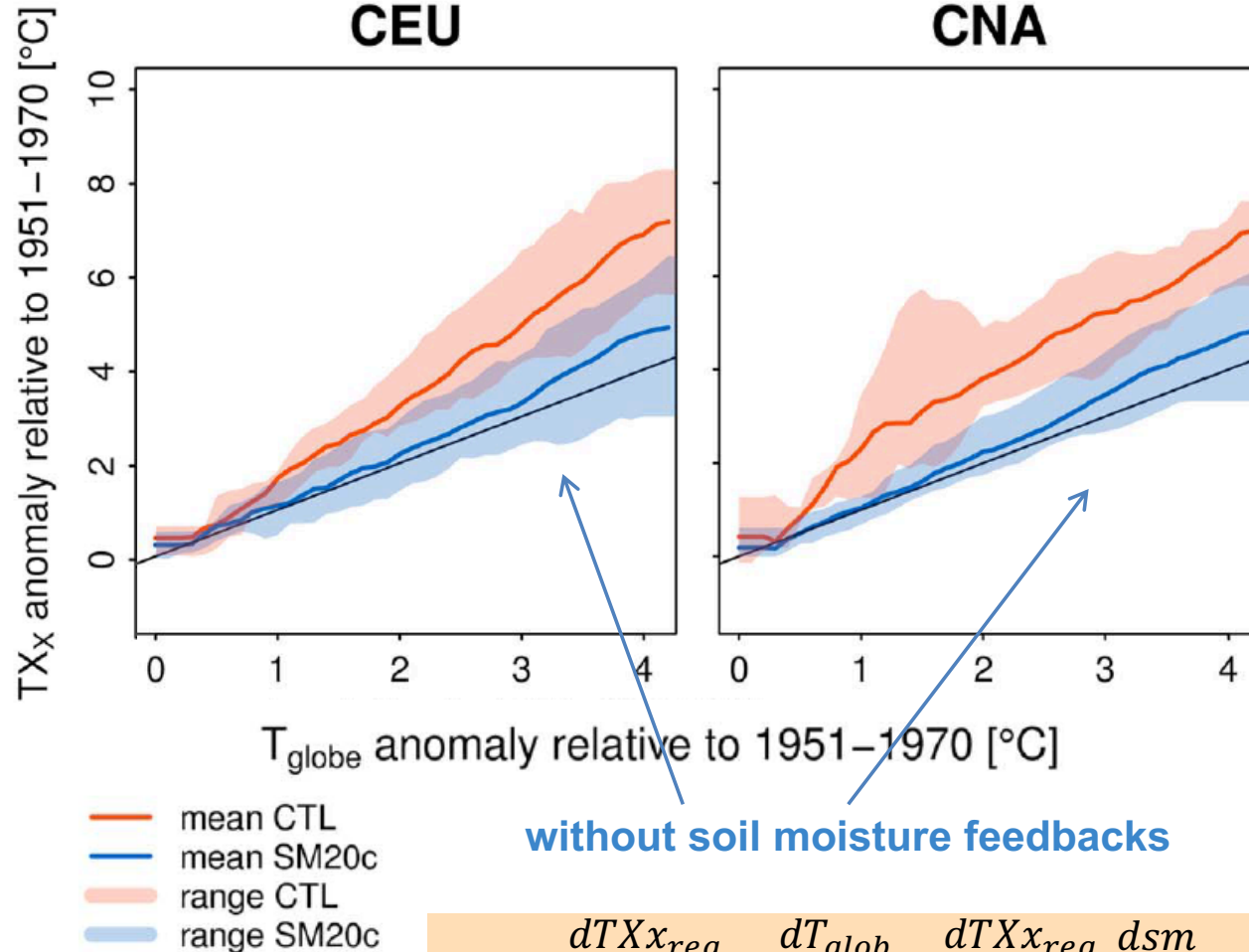


without soil moisture feedbacks

Soil moisture-temperature feedbacks are the main driver for the projected temperature extremes amplification in mid-latitudes!

(Vogel et al. 2017, GRL)

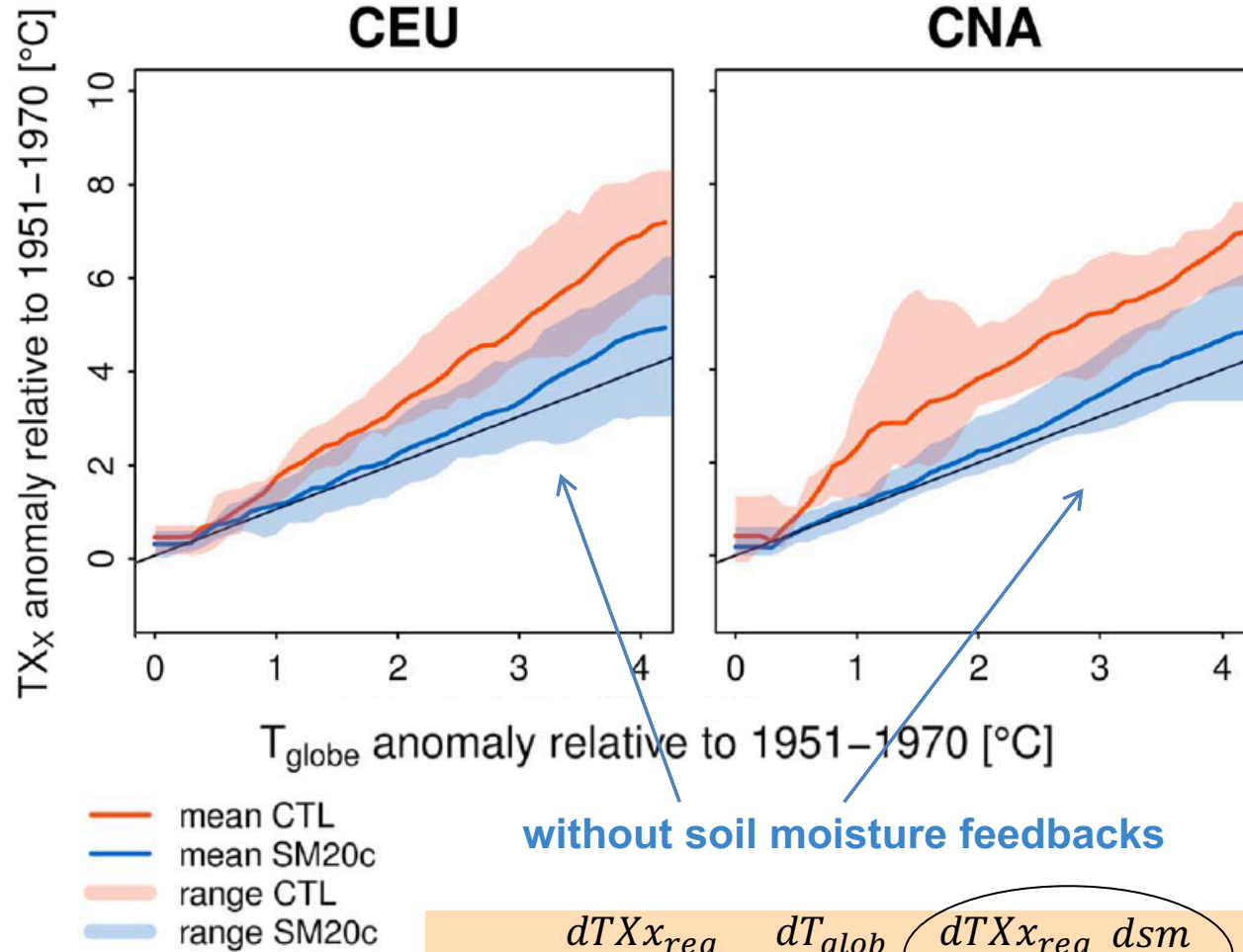
Scaling for GLACE-CMIP5 experiments



Soil moisture-temperature feedbacks are the main driver for the projected temperature extremes amplification in mid-latitudes!

$$\frac{dT_{Xx_{reg}}}{dCO_2} = \frac{dT_{glob}}{dCO_2} + \frac{dT_{Xx_{reg}}}{dsm} \frac{dsm}{dCO_2}$$

Scaling for GLACE-CMIP5 experiments



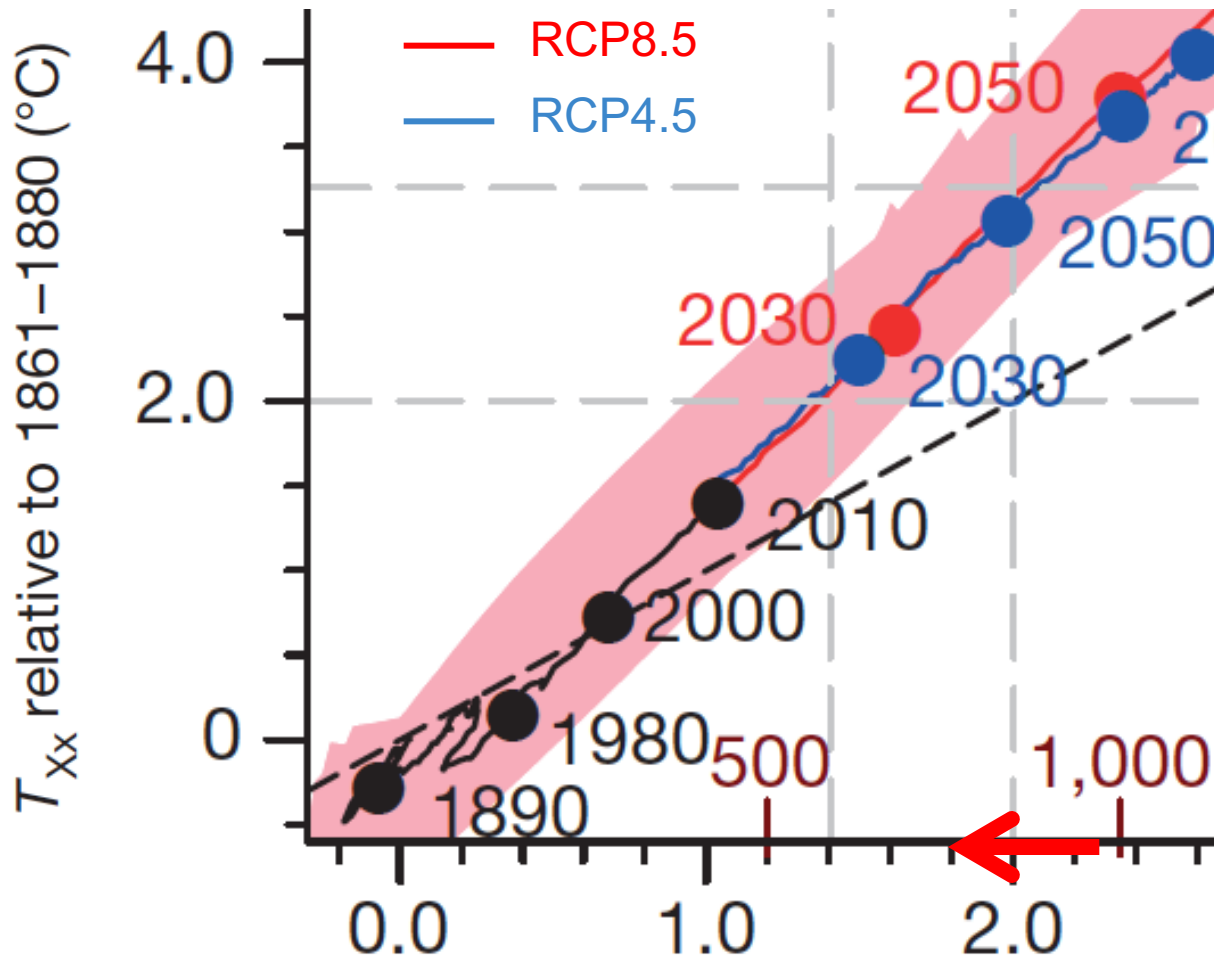
without soil moisture feedbacks

Soil moisture-temperature feedbacks are the main driver for the projected temperature extremes amplification in mid-latitudes!

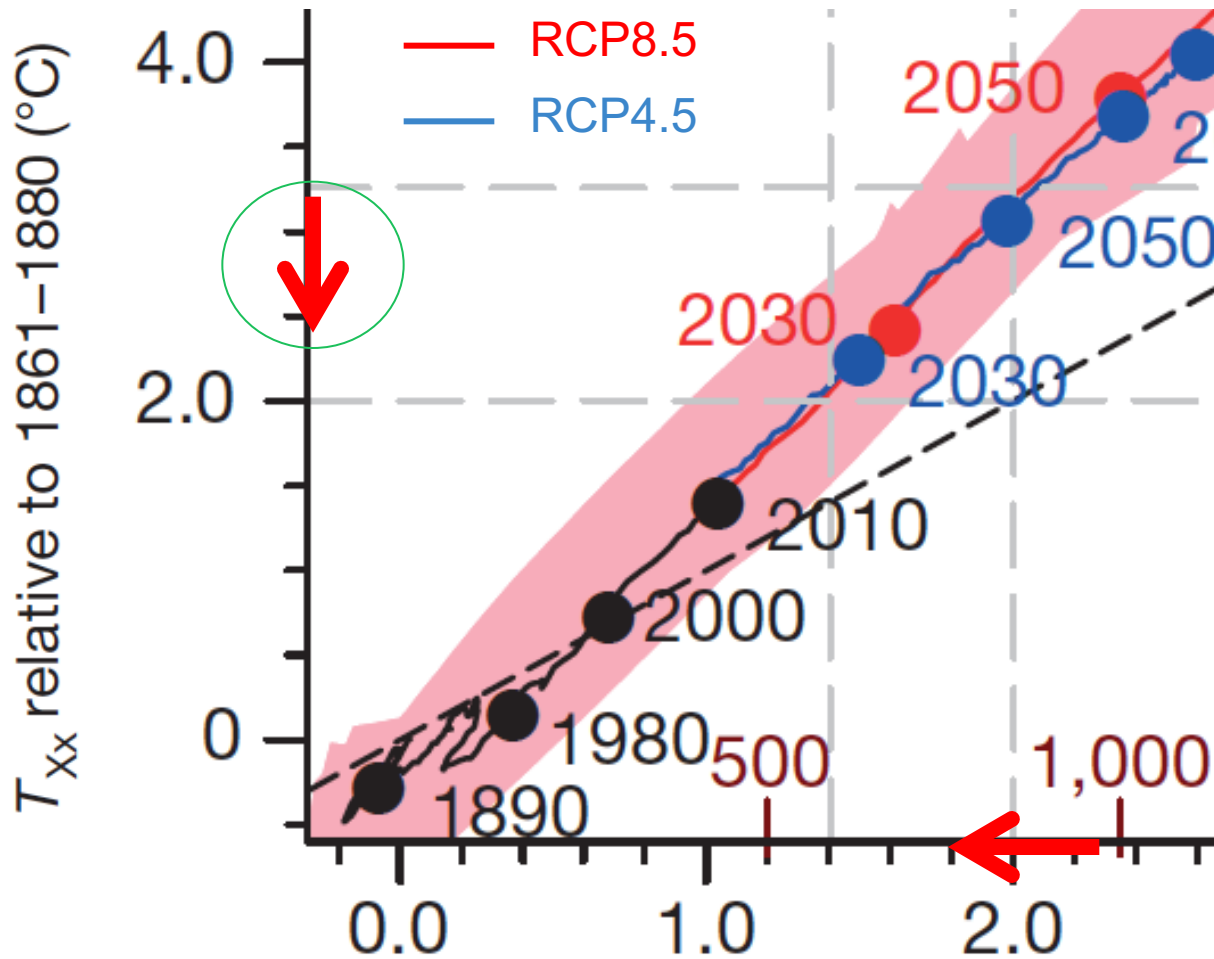
Regional climate sensitivity as additional controlling factor beside global climate sensitivity!

$$\frac{dT_{X_{reg}}}{dCO_2} = \frac{dT_{glob}}{dCO_2} + \frac{dT_{X_{reg}}}{dsm} \frac{dsm}{dCO_2}$$

- Relating changes in global temperature to regional extremes and impacts
- Role of soil moisture feedbacks for temperature projections: Global vs regional climate sensitivity
- Regional land-climate interactions in low-emissions scenarios
- Soil moisture and the carbon cycle
- Conclusions

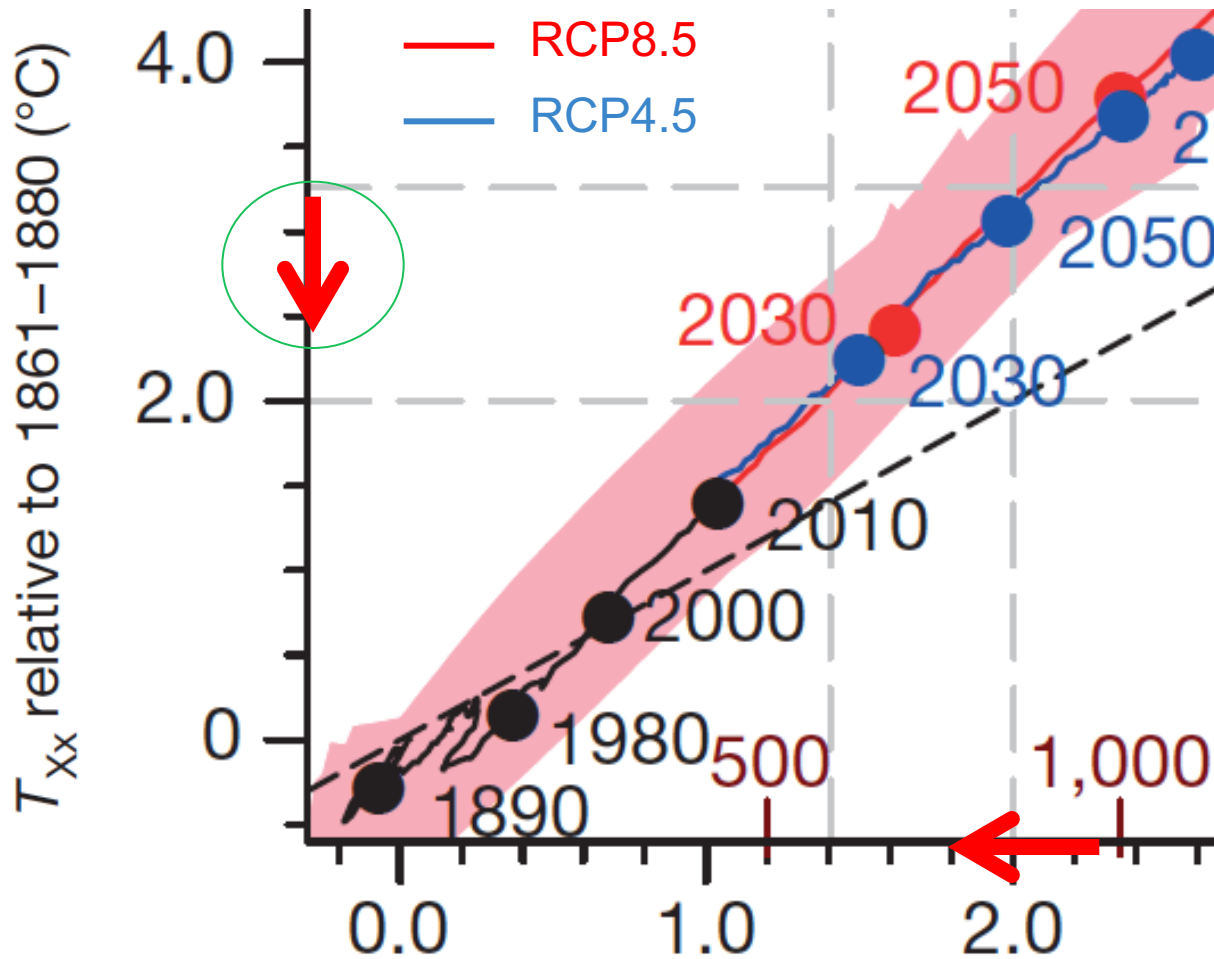


Global mean temperature anomaly relative to 1861-1880 (°C)



Regional scale increases in temperature extremes could also be reduced through a **reduction of the land-based amplification**

Global mean temperature anomaly relative to 1861-1880 (°C)



Regional scale increases in temperature extremes could also be reduced through a **reduction of the land-based amplification:**

Regional “land climate engineering”:

- Increased albedo (e.g. Davin et al. 2014, PNAS; Seneviratne et al. 2018, Nat. Geo)
- Irrigation (e.g. Thiery et al. 2017, JGR)

Cooling of up to 1-2C regionally....

Global mean temperature anomaly relative to 1861-1880 (°C)



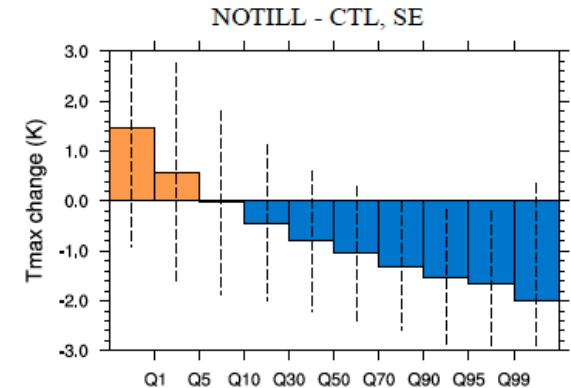
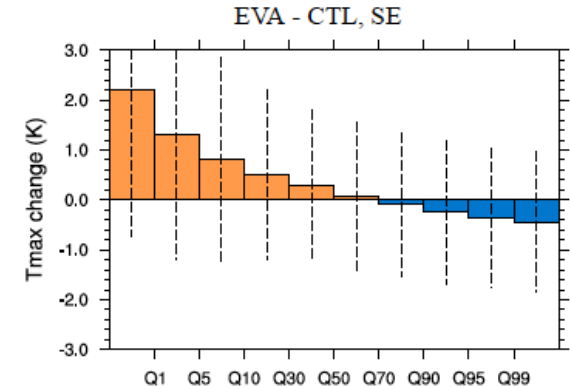
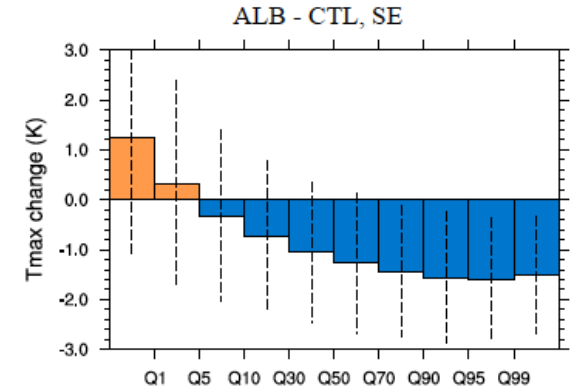


Substantial co-benefits (no-till farming)
Substantial trade-offs (e.g. afforestation)



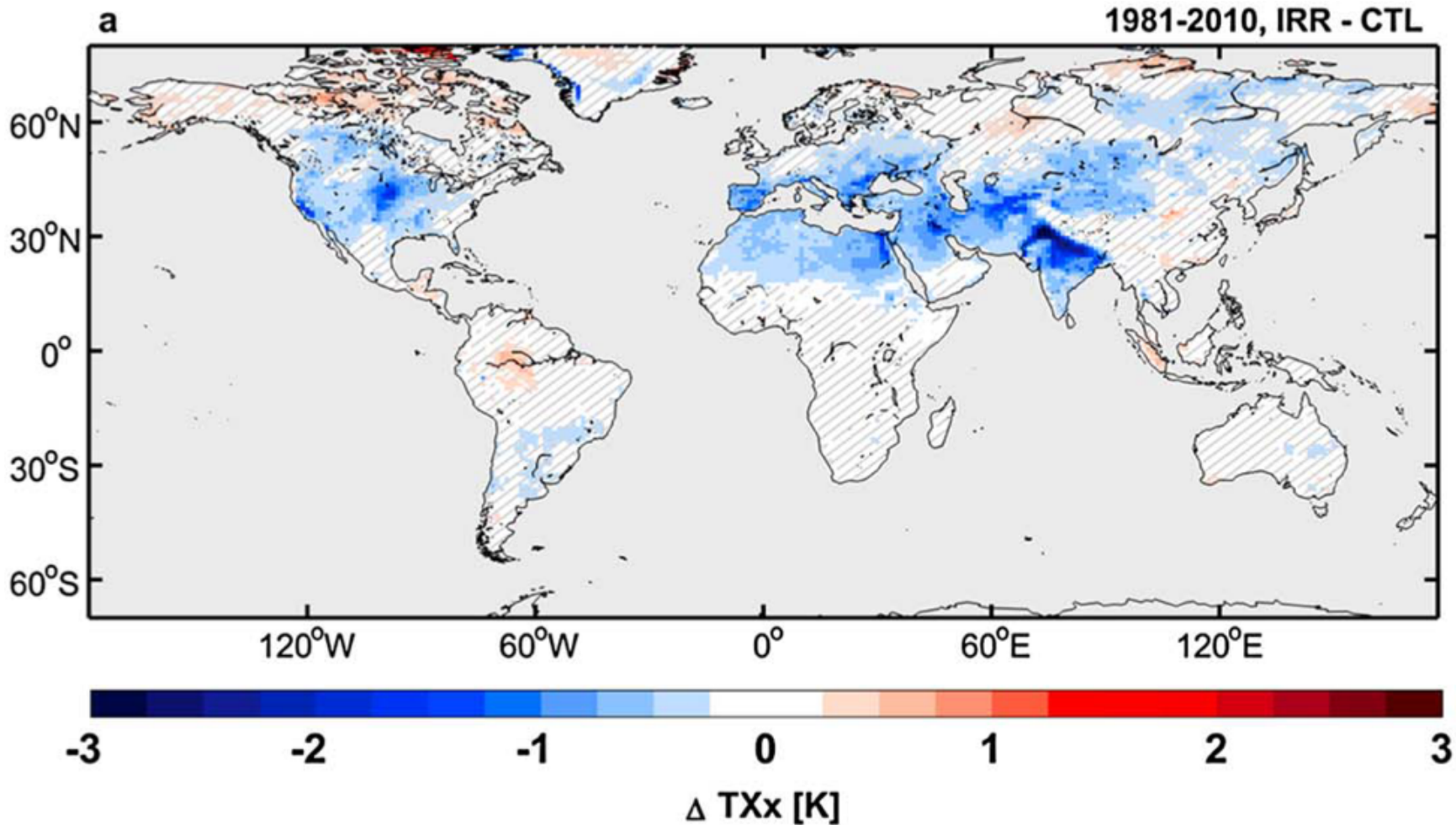
Impacts of no-till farming on regional temperature extremes:

Preferential cooling of hot extremes both from albedo and evaporation effects (up to 1-2C)!



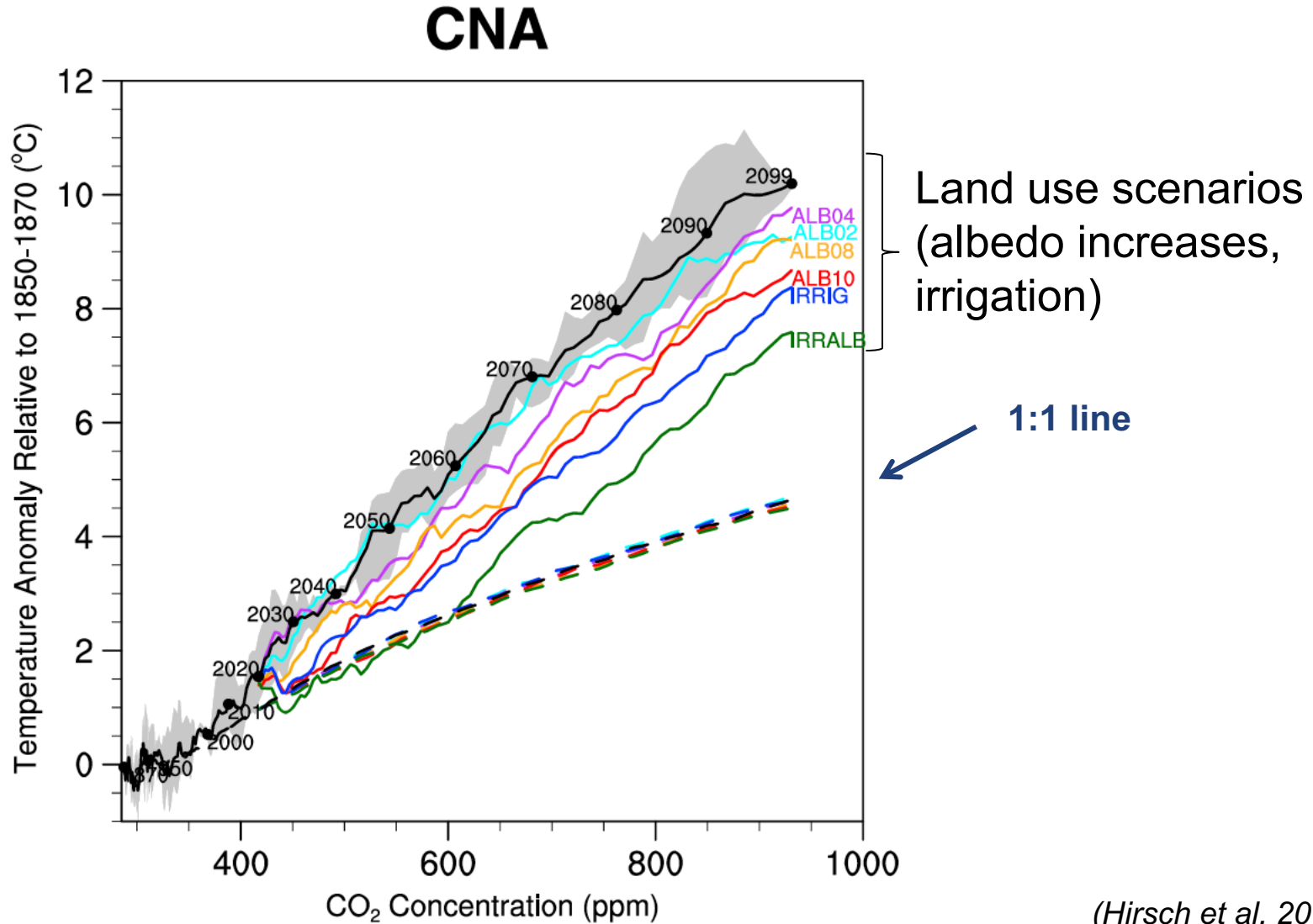
(Davin et al. 2014, PNAS)

Present-day impacts of irrigation



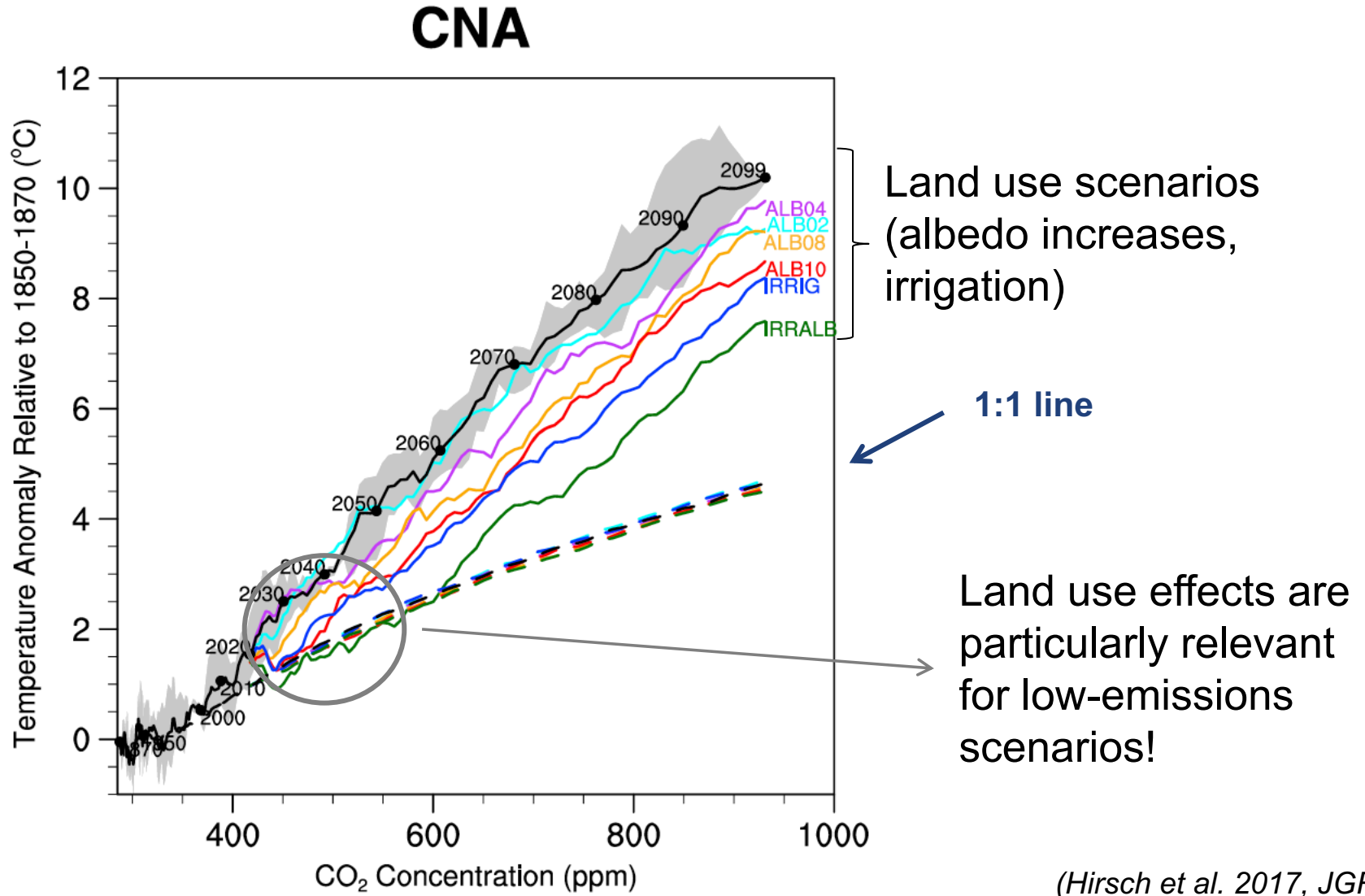
(Thiery et al. 2017, JGR)

Regional vs global climate change: Biophysical effects of land use

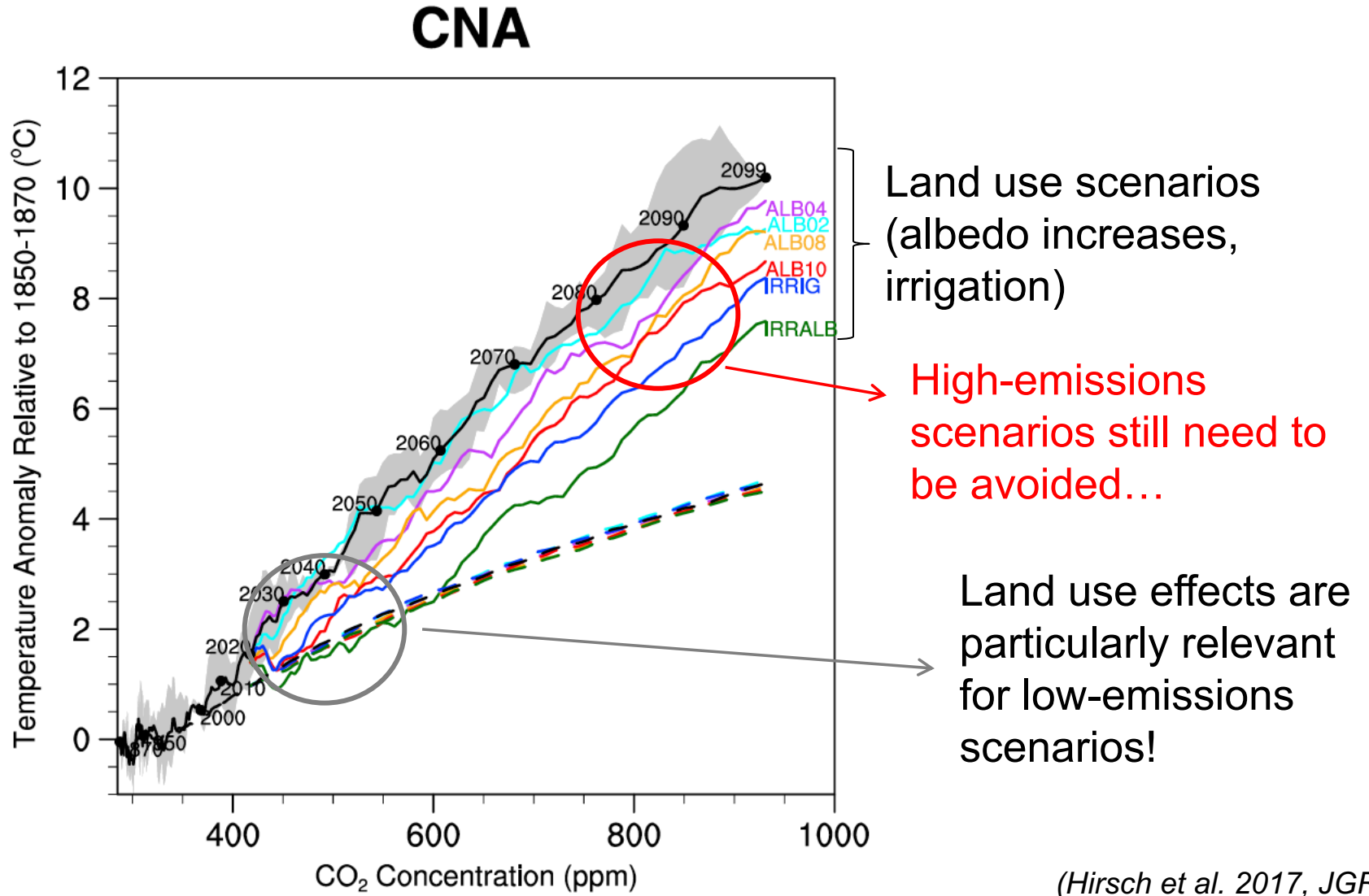


(Hirsch et al. 2017, JGR)

Regional vs global climate change: Biophysical effects of land use



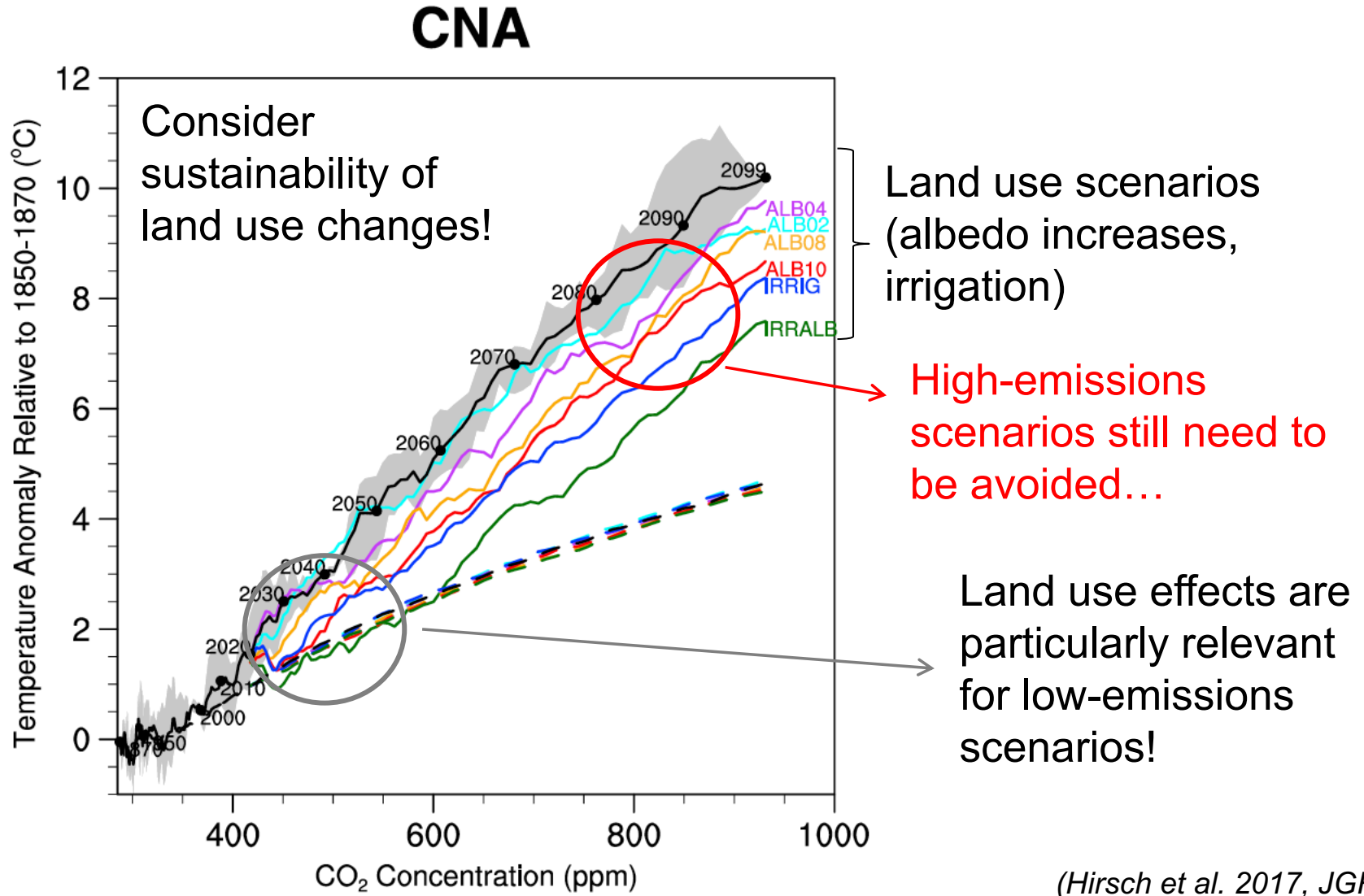
Regional vs global climate change: Biophysical effects of land use



Central North American warming, warmest day of the year [C]

(Hirsch et al. 2017, JGR)

Regional vs global climate change: Biophysical effects of land use

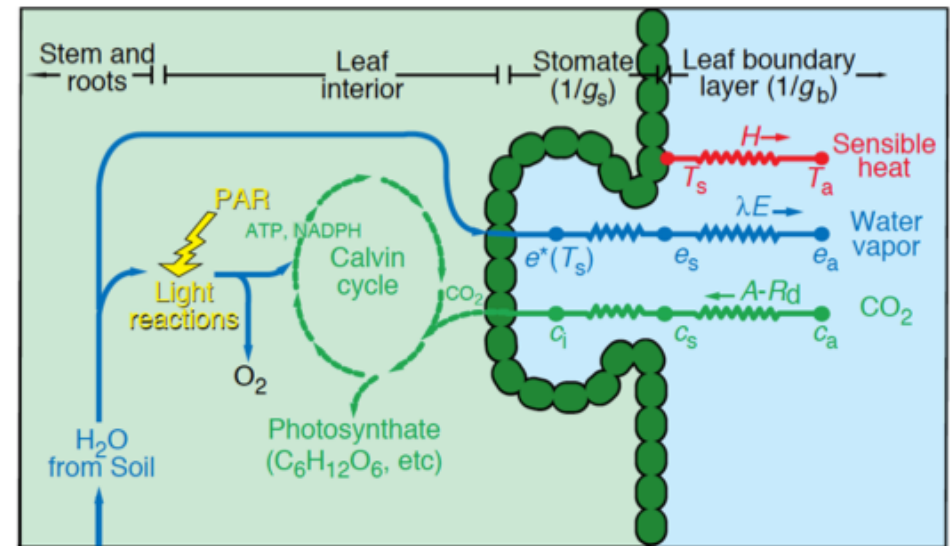
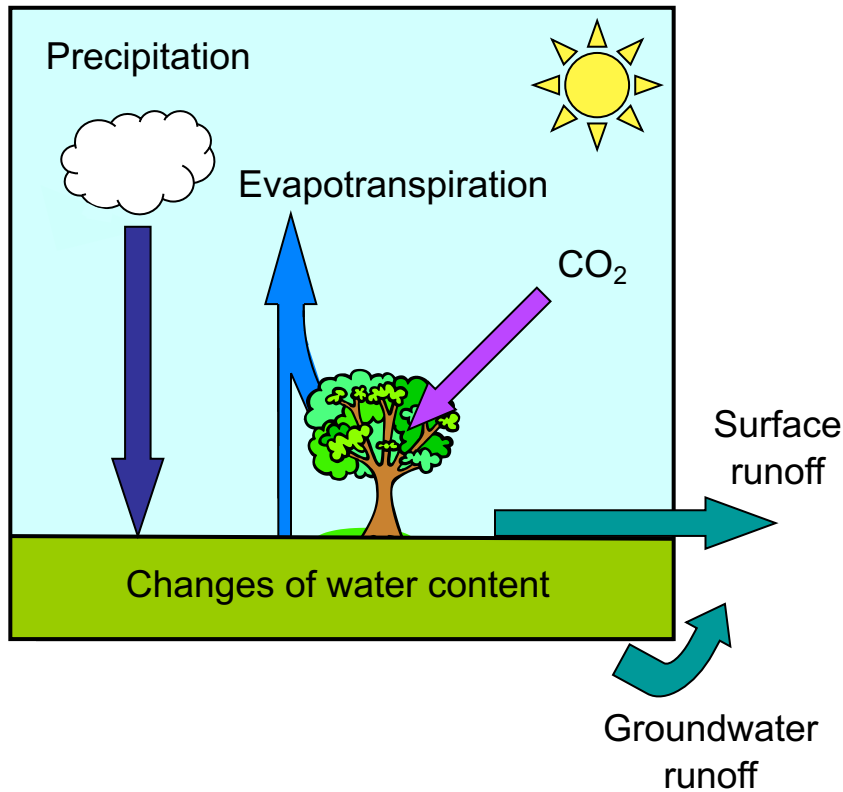


Central North American warming, warmest day of the year [C]

(Hirsch et al. 2017, JGR)

- Relating changes in global temperature to regional extremes and impacts
- Role of soil moisture feedbacks for temperature projections: Global vs regional climate sensitivity
- Regional land-climate interactions in low-emissions scenarios
- **Soil moisture and the carbon cycle**
- **Conclusions**

Through vegetation, the water and carbon cycles are interlinked



(Sellers et al. 1997, Science)

Land: sink for ca. 30% of CO₂ emissions

- Relating changes in global temperature to regional extremes and impacts
- Role of soil moisture feedbacks for temperature projections: Global vs regional climate sensitivity
- Regional land-climate interactions in low-emissions scenarios
- Soil moisture and the carbon cycle
- **Conclusions**

- Amplification of regional changes in temperature extremes with changes in global temperature (ca. 50% in mid-latitude) due to soil moisture-temperature feedbacks



- Amplification of regional changes in temperature extremes with changes in global temperature (ca. 50% in mid-latitude) due to soil moisture-temperature feedbacks
- Regional climate sensitivity:
 - Associated uncertainty can be larger than for global climate sensitivity!
 - Land processes are strong control



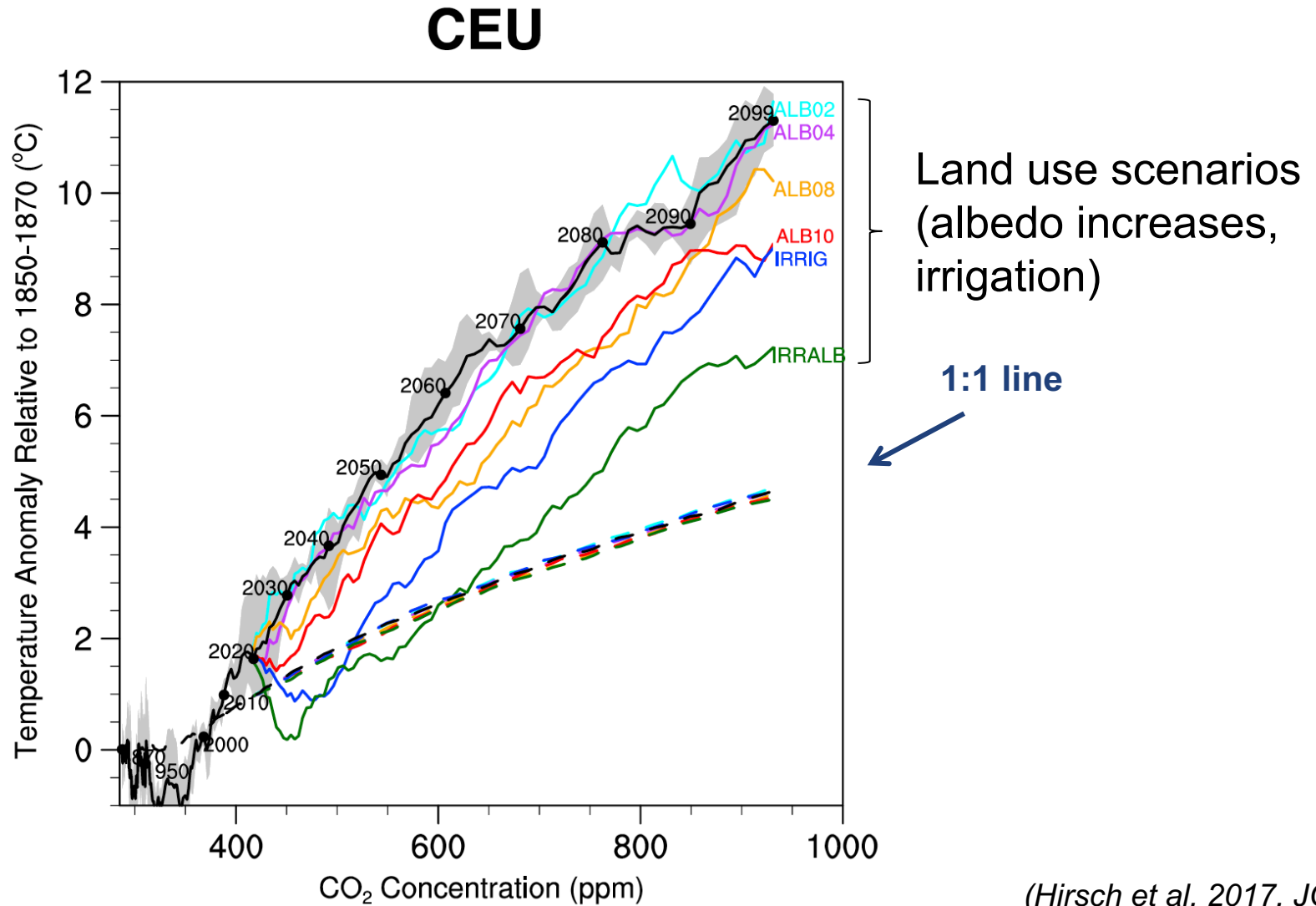
- Amplification of regional changes in temperature extremes with changes in global temperature (ca. 50% in mid-latitude) due to soil moisture-temperature feedbacks
- Regional climate sensitivity:
 - Associated uncertainty can be larger than for global climate sensitivity!
 - Land processes are strong control
- Land forcing plays a major role for low-emissions scenarios
- Soil moisture can also affect global climate through impacts on carbon cycle!

Contact: sonia.seneviratne@ethz.ch



Regional vs global climate change: Biophysical effects of land use

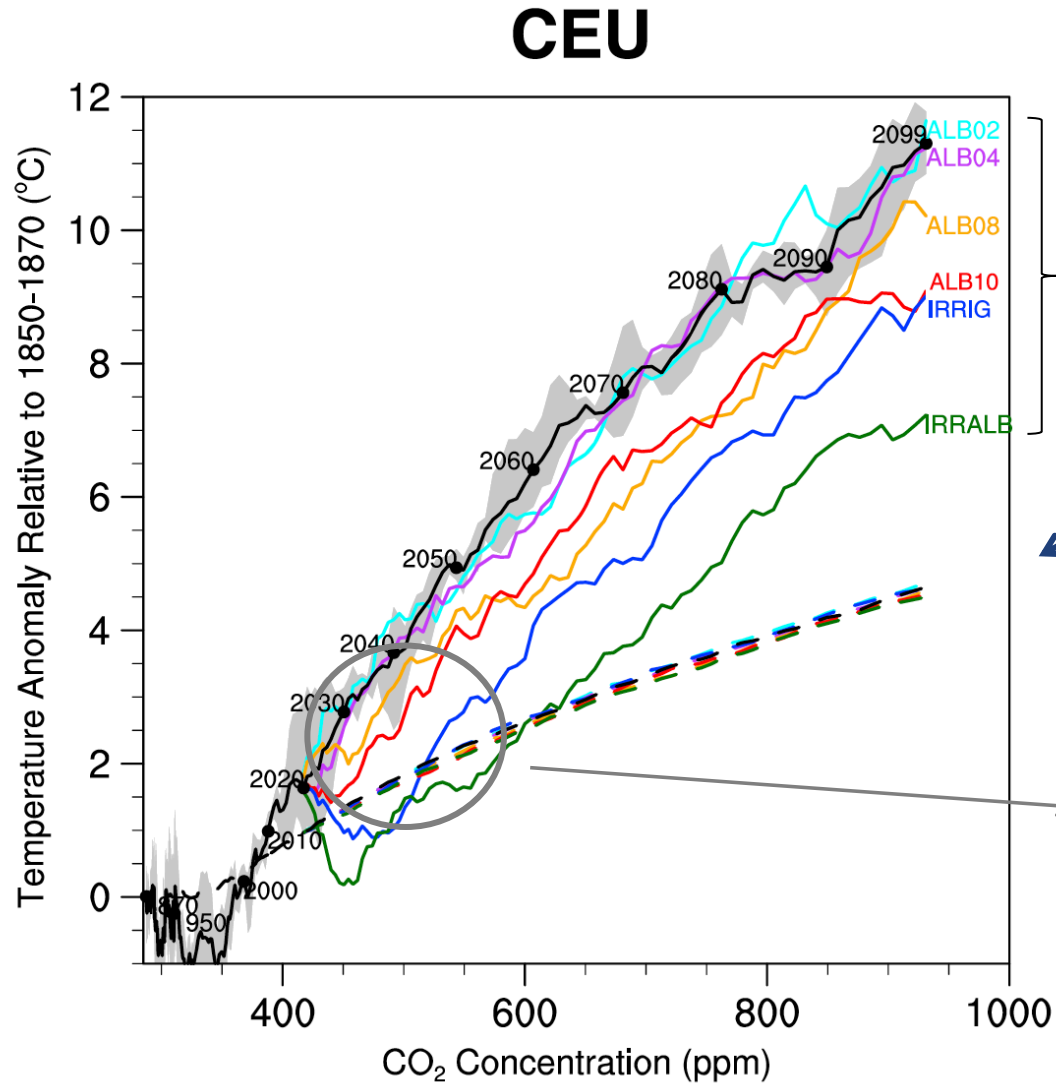
**Central European
warming, warmest
day of the year [C]**



(Hirsch et al. 2017, JGR)

Regional vs global climate change: Biophysical effects of land use

Central European
warming, warmest
day of the year [C]



Land use scenarios
(albedo increases,
irrigation)

1:1 line

Land use effects are
particularly relevant
for low-emissions
scenarios!

(Hirsch et al. 2017, JGR)